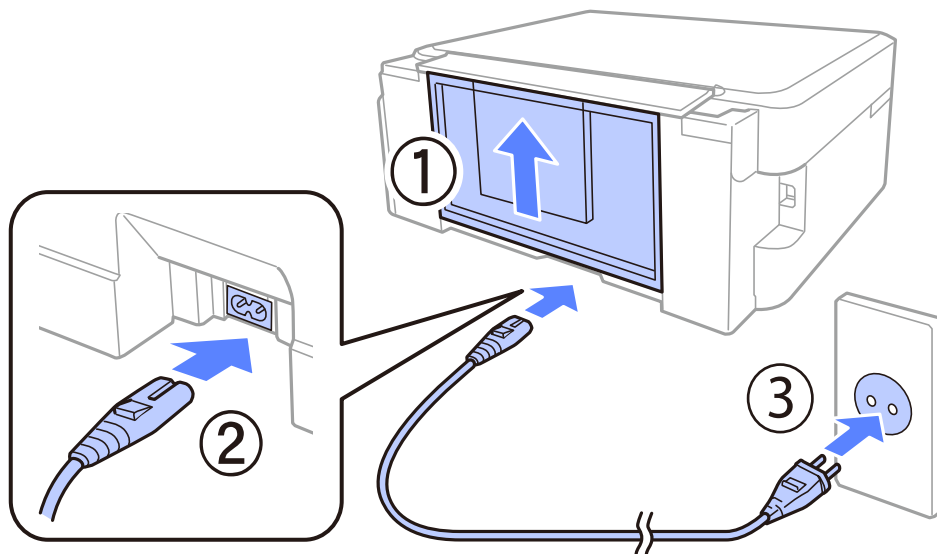

Setup

Turning on the Printer

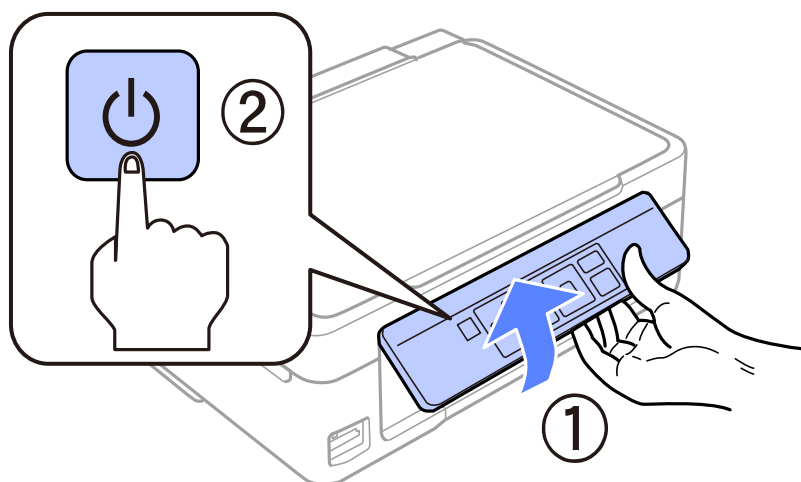
Step. 1

Connect the power cable and plug it in. Go to the next step.



Step. 2

Raise the control panel manually and turn on the printer.



If an error occurs check that there is no packaging material remaining inside the printer.

Setup

Selecting a Language

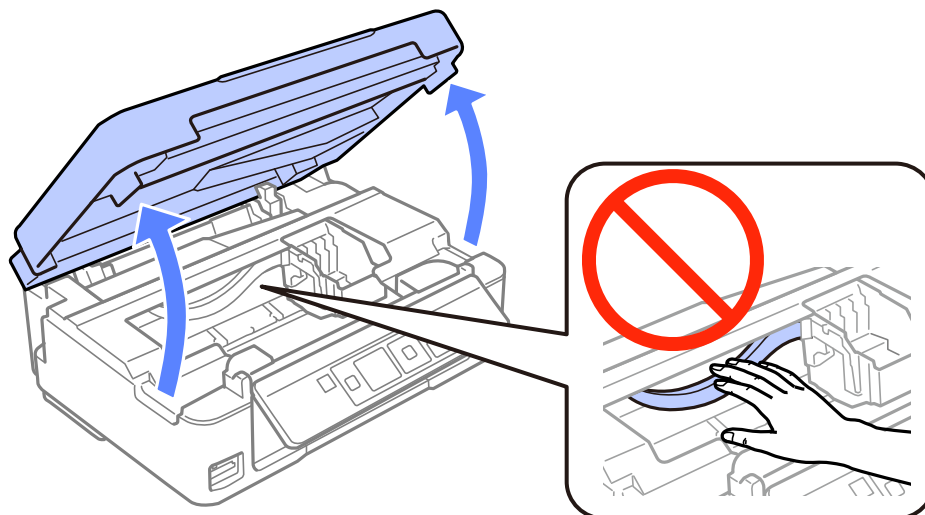
Go to the printer and select your language. Then press OK button.



Installing Ink Cartridges

Step. 1

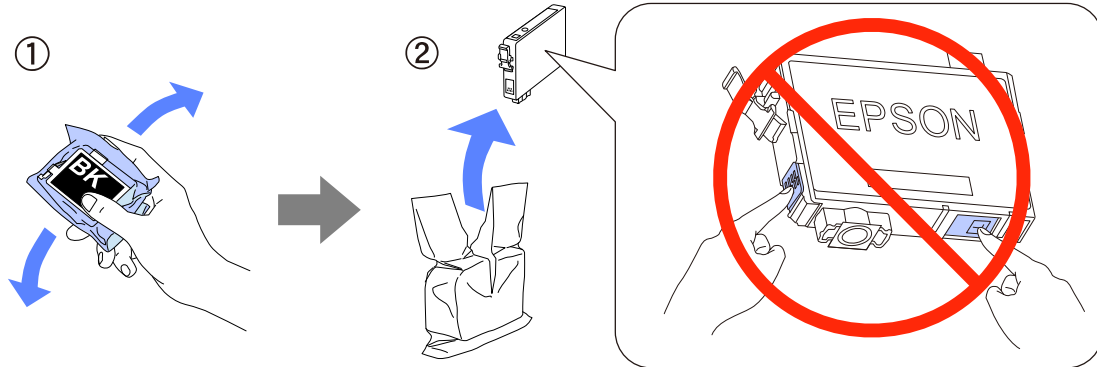
Raise the scanner unit.



Setup

Step. 2

Shake the BLACK cartridge four or five times. Do not shake the other cartridges. Remove all ink cartridges from their packaging.

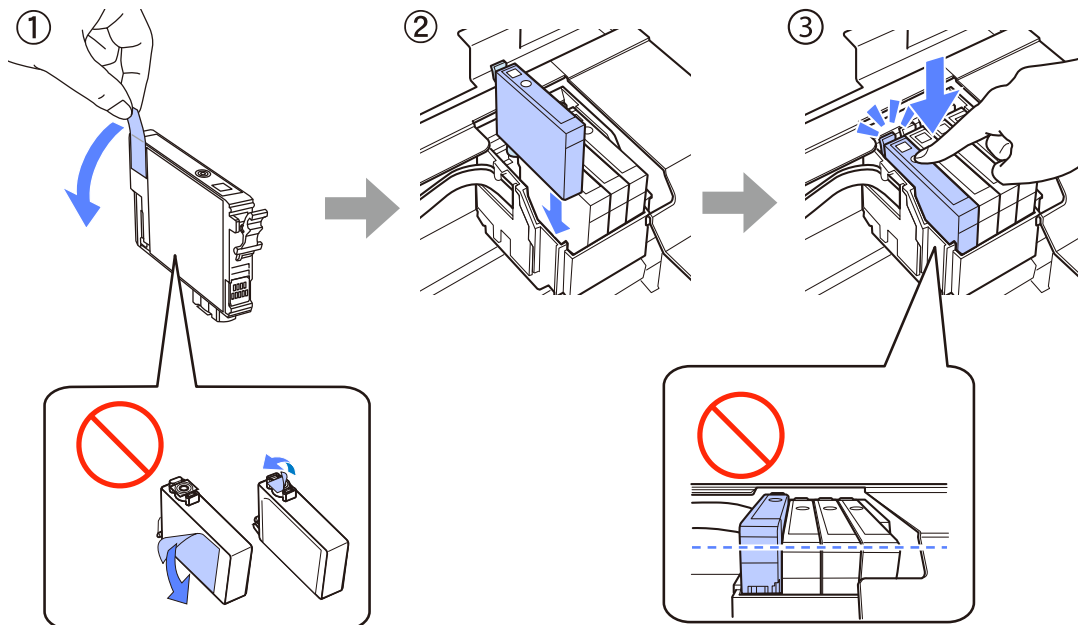


For the initial setup, make sure you use the ink cartridges that came with this printer. These cartridges cannot be saved for later use. The initial ink cartridges will be partly used to charge the print head. These cartridges may print fewer pages compared to subsequent ink cartridges.

Do not touch the green chip or the small window on the side of the cartridge.

Step. 3

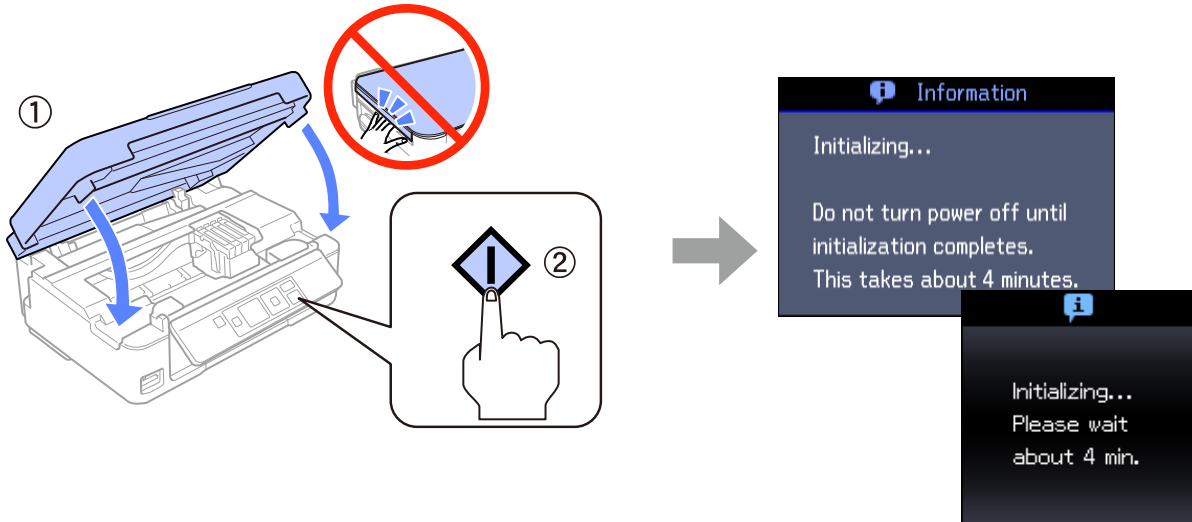
Remove only the yellow tape from the cartridges, and then insert each cartridge fully until it clicks into place.



Setup

Step. 4

Close the scanner unit slowly, and then press the \diamond button on the printer. The following information is displayed on the printer's screen while the printer is charging the ink.

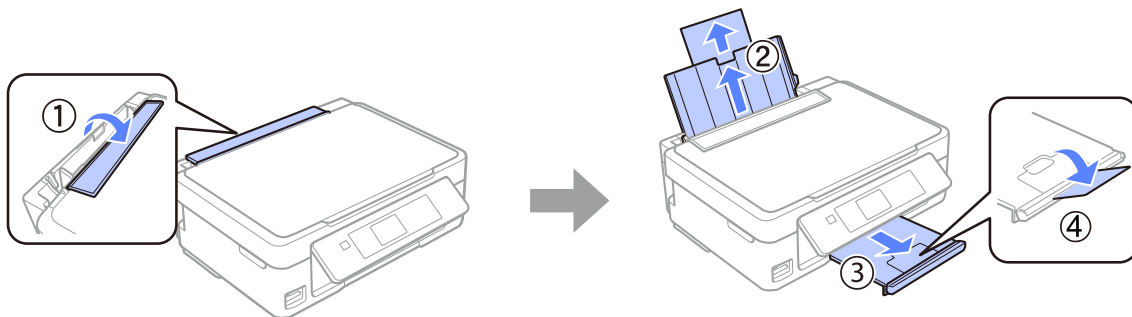


Paper

Loading Paper

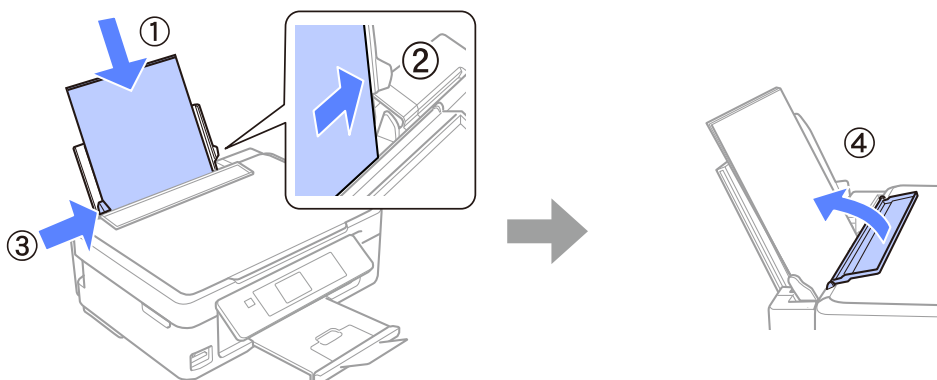
Step. 1

1. Flip the feeder guard forward.
2. Slide out the paper support.
3. Pull out the output tray.
4. Raise the stopper.



Step. 2

1. Load the paper with the printable side facing up.
2. Push the edge of the sheet against the right side of the sheet feeder.
3. Slide the edge guide against the left edge of the paper.
4. Flip the feeder guard up against the paper.



Do not load paper above the ▼ arrow mark inside the edge guide.

Paper

Information

Do you know that you can influence the impact you have on the environment when printing?

1. The type of paper you use has an influence on the environmental impact of your printer. Choosing paper certified under environmental stewardship initiatives, such as EN 12281:2002, or carrying recognised ecolabels, can help reduce your impact on the environment through the initiatives the manufacturers implement. For specific applications, lighter paper, such as 64 g/m² paper, can be used.
2. You can reduce your power consumption by purchasing Energy Star compliant products.
3. You can reduce your paper consumption and the impact on the environment by automatically printing on both sides of the page.
4. As standard, your printer has a power management function that powers down your product when not in use, which is a great energy saving feature.