

# Epson Projector Content Manager

## Software Overview

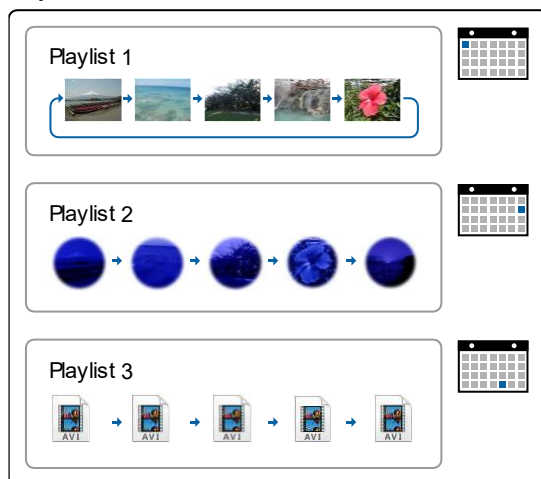
Software Name	Epson Projector Content Manager
Ver	1.20
Release Date	2020/5/22
Supported OS	<ul style="list-style-type: none"> <li>Windows 7 (32bit/64bit)</li> <li>Windows 8.1 (32bit/64bit)</li> <li>Windows 10 (32bit/64bit)</li> </ul>
File size	27.7 MB

## Epson Projector Content Manager Features

The Epson Projector Content Manager software allows you to add images and movies to playlists, and save them on an external storage device. Inserting the storage device into the projector, you can easily project your playlist content without using a cable connection.

### ■ Editing Playlist

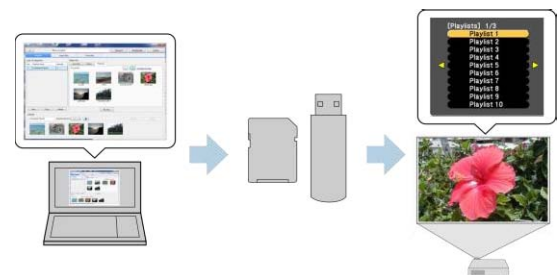
Project



### ■ Adding Effects to a Playlist



### ■ Exporting a Project to an External Storage Device



## Software Release History

Ver	Release Date	Update Contents
1.20	2020/5/22	- Added saving method of the playlist. - Added the preview function.
1.10	2019/9/10	

EPSON is a registered trademark, EXCEED YOUR VISION and its logos are registered trademarks or trademarks of Seiko Epson Corporation. Windows is a trademark of Microsoft Corporation in the United States and/or other countries. Other product names used herein are also for identification purposes only and may be trademarks of their respective owners. Epson disclaims any and all rights in those marks.  
This information is subject to change without notice. ©SEIKO EPSON CORPORATION 2019. All rights reserved.