

GP-C830/831/832

Compressed data Driver User's Guide

Product Overview

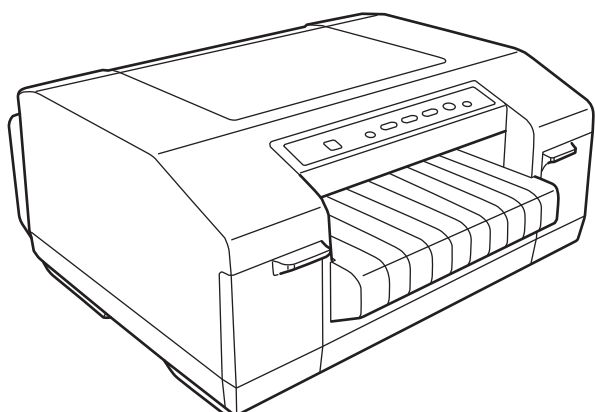
Describes features for the product.

Installation

Describes how to install the product.

Product information

Describes information about the product.



Cautions

- No part of this document may be reproduced, stored in a retrieval system, or transmitted in any form or by any means, electronic, mechanical, photocopying, recording, or otherwise, without the prior written permission of Seiko Epson Corporation.
- The contents of this document are subject to change without notice. Please contact us for the latest information.
- While every precaution has taken in the preparation of this document, Seiko Epson Corporation assumes no responsibility for errors or omissions.
- Neither is any liability assumed for damages resulting from the use of the information contained herein.
- Neither Seiko Epson Corporation nor its affiliates shall be liable to the purchaser of this product or third parties for damages, losses, costs, or expenses incurred by the purchaser or third parties as a result of: accident, misuse, or abuse of this product or unauthorized modifications, repairs, or alterations to this product, or (excluding the U.S.) failure to strictly comply with Seiko Epson Corporation's operating and maintenance instructions.
- Seiko Epson Corporation shall not be liable against any damages or problems arising from the use of any options or any consumable products other than those designated as Original EPSON Products or EPSON Approved Products by Seiko Epson Corporation.

Trademarks

Microsoft®, Windows®, Windows Vista®, Windows Server®, Win32®, Visual Basic®, Visual C++®, and Visual C#® are registered trademarks of Microsoft Corporation in the United States and other countries.

EPSON is a registered trademark of Seiko Epson Corporation.

Exceed Your Vision is a registered trademark or trademark of Seiko Epson Corporation.



All other trademarks are the property of their respective owners and used for identification purpose only.

Copyright © 2015 Seiko Epson Corporation. All rights reserved.

For Safety

Key to Symbols

The symbols in this manual are identified by their level of importance, as defined below. Read the following carefully before handling the product.

	Provides information that must be observed to avoid damage to your equipment or a malfunction.
	Provides important information and useful tips.

Restriction of Use

When this product is used for applications requiring high reliability/safety such as transportation devices related to aviation, rail, marine, automotive etc.; disaster prevention devices; various safety devices etc; or functional/precision devices etc, you should use this product only after giving consideration to including fail-safes and redundancies into your design to maintain safety and total system reliability. Because this product was not intended for use in applications requiring extremely high reliability/safety such as aerospace equipment, main communication equipment, nuclear power control equipment, or medical equipment related to direct medical care etc, please make your own judgment on this product's suitability after a full evaluation.

About this Manual

Aim of the Manual

This manual is intended for users of the software and development engineers to provide information about how to use the GP-C830/831/832 Compressed data Driver.

Manual Content

The manual is made up of the following sections:

- Chapter 1 [Product Overview](#)
- Chapter 2 [Installation](#)
- Chapter 3 [Product information](#)

Contents

■ For Safety	3
Key to Symbols	3
■ Restriction of Use	3
■ About this Manual	4
Aim of the Manual.....	4
Manual Content	4
■ Contents	5

Product Overview 6

■ Introduction	6
■ Features	6
■ About the package.....	7
■ Specifications and Restrictions	7

Installation 9

■ Operating Environment.....	9
■ Preparation.....	9
■ Installation	10
■ How to use.....	11

Product information 12

■ OPEN SOURCE SOFTWARE LICENSE	12
--------------------------------------	----

Product Overview

Introduction

This manual is a User's Guide for the EPSON GP-C83x Compressed data Driver.

This section describes the EPSON GP-C83x Compressed data Driver, which is a printer driver dedicated to the GP-C830/831/832.

Features

When printing out a large volume of labels using a remotely connected GP-C830/831/832, the amount of data can be reduced by using the EPSON GP-C83x Compressed data Driver.

The EPSON GP-C83x Compressed data Driver is effective when printing out the following documents.

- A document with many pages

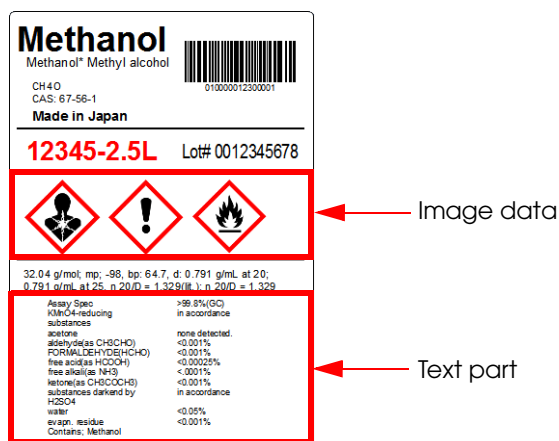
Even when the document is about 10 pages, it is effective to reduce the amount of communication data.

As the number of pages increases, the effect of reducing the communication data amount becomes greater.

- A document with multiple pages but the content of the pages is almost the same

If only partial information such as the page number or serial number are different in each page, it is effective to reduce the amount of communication data. If the content of each page differs greatly, the effect of reducing the communication data amount becomes smaller.

Example: When the image data is the same throughout the pages but the text part is different



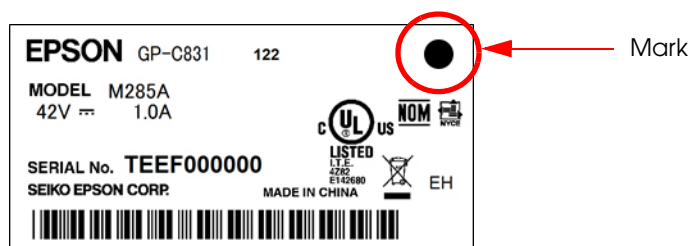
About the package

The "gpc83xCD_1005.zip" package file of the EPSON GP-C83x Compressed data Driver includes the following files.

Item	Description
gpc83xCD32_1005.exe	32-bit OS installer
gpc83xCD64_1005.exe	64-bit OS installer
GP-C830_831_832_Compressed_data_Driver_User's_Guide_en_rev.A.pdf	This manual
OSS.pdf	Open Source Software License Terms
readme.txt	Release notes

Specifications and Restrictions

The EPSON GP-C83x Compressed data Driver can be used with models which have the following mark on the nameplate label on the back of the GP-C830/831/832.



Interface

Can be used only with Ethernet interface (100BASE-TX/10BASE-T interface).

Cannot be used with parallel interface and USB interface.

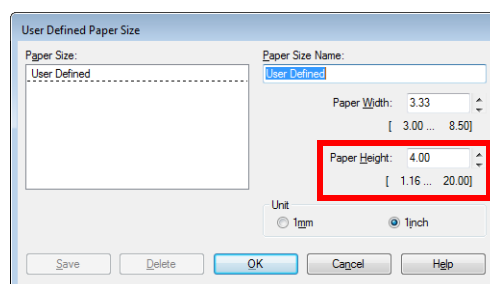
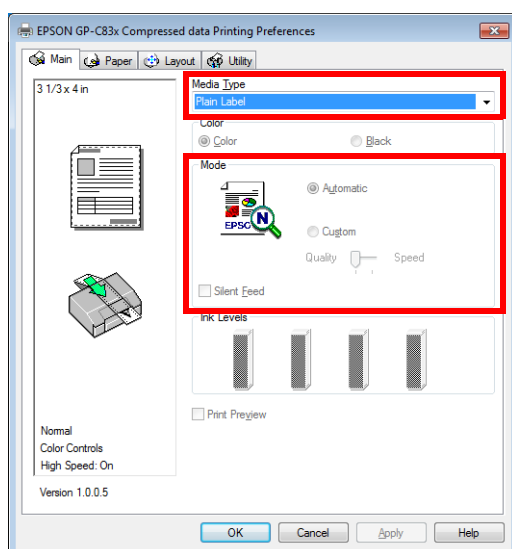
Printer Driver

Differences from the GP-C830/831/832 standard driver are as follows:



- Functions that are not available are grayed out and cannot be selected.
- Help is common to the standard driver.
- For details on each function, see the GP-C830/831/832 User's Guide.

Item	Description
Media Type	Only label paper can be set.
Mode	Fixed to Automatic
User Defined Paper Size	Minimum Paper Height: 1.16 inch Maximum Paper Height: 20 inch



Installation

Operating Environment

- Windows 8.1 (32/64bit)
- Windows 8 (32/64bit)
- Windows 7 SP1 (32/64bit)
- Windows Vista SP2 (32/64bit)
- Windows XP SP2 (64bit)
- Windows XP SP3 (32bit)
- Windows Server 2012 R2
- Windows Server 2012
- Windows Server 2008 R2 SP1
- Windows Server 2008 SP2 (32/64bit)
- Windows Server 2003 SP2 (32/64bit)

Preparation

You do not need to uninstall the standard driver.

Perform the following operation using the administrator right.

- 1** Set the IP address in the printer.



For the IP address setting, use EPSON Net Config.
For details, see the GP-C830/831/832 User's Guide.

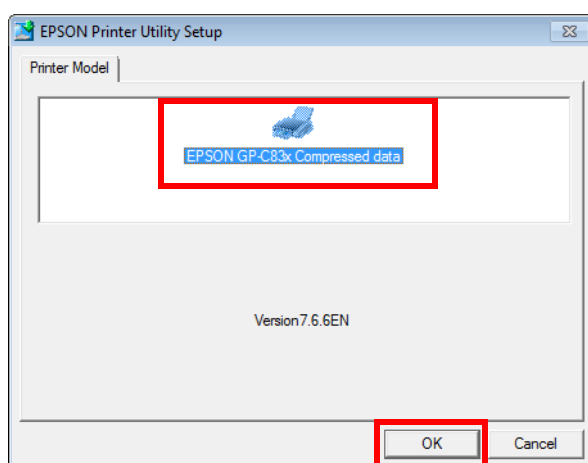
- 2** Create a port to connect the printer to.

- Port type: Standard TCP/IP Port
- IP address: The IP address set in Step 1.

Installation

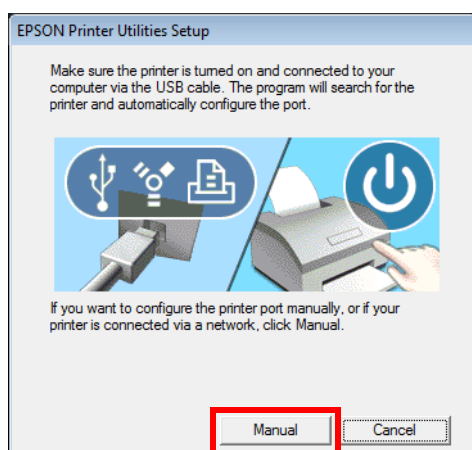
According to usage environment, execute the desired package, for either 32-bit OS or 64-bit OS. The installation procedure explained below is when the package for the 64-bit OS is executed. Same installation method can be used for the 32-bit OS package.

- 1 Check the Printer Model and press the (OK) button.

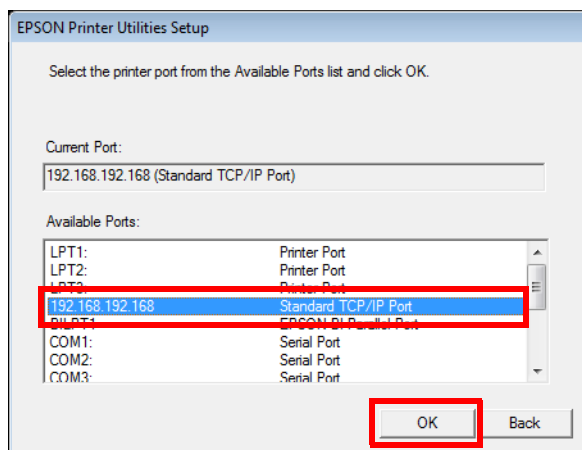


After this, follow the screen prompts.

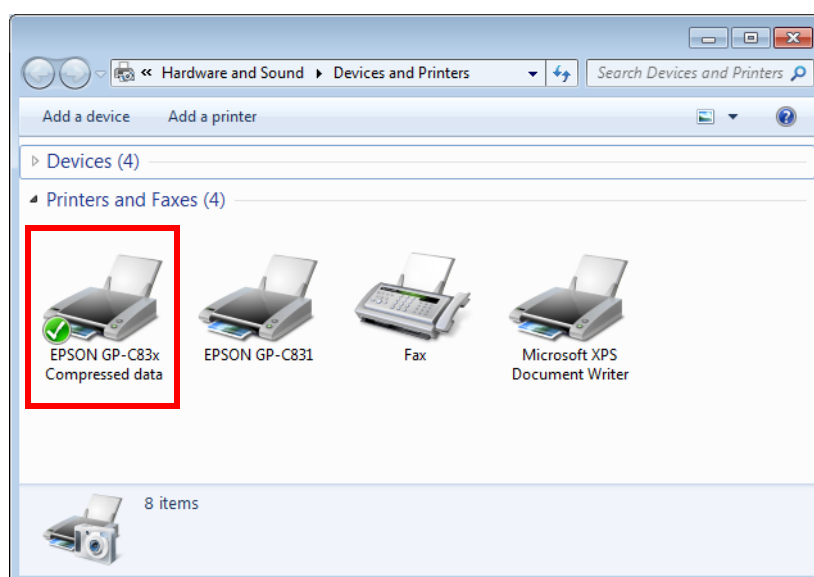
- 2 When the EPSON Printer Utilities Setup window appears, press the (Manual) button.



- 3** Select the port, which you prepared beforehand, and then press the (OK) button.



- 4** When installation is completed, the printer driver is added to the (Devices and Printers) window.



How to use

Basic usage of EPSON GP-C83x Compressed data Driver is the same as that of the standard driver.

For details, see GP-C830/831/832 User's Guide and ["Specifications and Restrictions" on page 7](#).

Product information

OPEN SOURCE SOFTWARE LICENSE

1. This printer product includes open source software programs listed in Section 4) according to the license terms of each open source software program.
2. The open source software programs are WITHOUT ANY WARRANTY; without even an implied warranty of MERCHANTABILITY AND FITNESS FOR A PARTICULAR PURPOSE. See the license agreements of each open source software program for more details, which are described in OSS.pdf.
3. The license terms of each open source software program are described in OSS.pdf.
4. A list of open source software programs which this printer product includes are as follows.

ZLIB license

This printer product includes the open source software program "zlib 1.2.8", which applies the terms and conditions provided by owner of the copyright to the "ZLIB license".

libpng License

This printer product includes the open source software program "libpng 1.6.12", which applies the terms and conditions provided by owner of the copyright to the "libpng License".