

**CONFIDENTIAL**

**EPSON**

**TM FontRunner for Windows**  
**Version 1.67.xx**  
**User's Manual (English)**

Copied Date	
-------------	--

**SEIKO EPSON CORPORATION**

## CAUTIONS

1. This document shall apply only to the product(s) identified herein.
2. No part of this document may be reproduced, stored in a retrieval system, or transmitted in any form or by any means, electronic, mechanical, photocopying, recording, or otherwise, without the prior written permission of Seiko Epson Corporation.
3. The contents of this document are subject to change without notice. Please contact us for the latest information.
4. While every precaution has been taken in the preparation of this document, Seiko Epson Corporation assumes no responsibility for errors or omissions.
5. Neither is any liability assumed for damages resulting from the use of the information contained herein.
6. Neither Seiko Epson Corporation nor its affiliates shall be liable to the purchaser of this product or third parties for damages, losses, costs, or expenses incurred by the purchaser or third parties as a result of: accident, misuse, or abuse of this product or unauthorized modifications, repairs, or alterations to this product, or (excluding the U.S.) failure to strictly comply with Seiko Epson Corporation's operating and maintenance instructions.
7. Seiko Epson Corporation shall not be liable against any damages or problems arising from the use of any options or any consumable products other than those designated as Original EPSON Products or EPSON Approved Products by Seiko Epson Corporation.

EPSON® is registered trademark of Seiko Epson Corporation.

Windows® is registered trademark of Microsoft Corporation.

Other product names mentioned herein may be either trademarks or registered trademarks of their respective owners.

© Seiko Epson Corporation 2013-2023. All rights reserved.

## **Contents**

<b>1</b>	<b>Introduction</b>	<b>1</b>
1.1	Manual Objective .....	1
1.2	Construction of this Manual .....	1
1.3	Utility Functions .....	1
1.4	Password.....	1
1.5	Restrictions .....	2
<b>2</b>	<b>Installation</b>	<b>3</b>
2.1	Software and Hardware Environment .....	3
2.2	Installing the Utility .....	3
2.3	Uninstall.....	5
<b>3</b>	<b>Operation of TM FontRunner for Windows</b>	<b>6</b>
3.1	Starting the TM FontRunner .....	6
3.2	Inputting a Password .....	6
3.3	File Menus .....	6
3.4	Create Pattern .....	8
3.5	Edit Pattern.....	9
3.6	Select Character Code .....	9
3.7	Half Dot Font .....	10
3.8	(Batch) Half dot processing.....	12
3.9	Save to File.....	12
3.10	Load from File .....	12
3.11	Print to Terminal Printer .....	12
3.12	Read Font pattern from TM Printer .....	12
3.13	Write Font pattern to TM Printer.....	13
3.14	Standard Page.....	14
3.15	DM-D Font .....	15
3.16	Batch Download .....	15
3.17	Change Command Initial Value .....	16
3.18	Test Print.....	17
<b>4</b>	<b>Options</b>	<b>18</b>
4.1	Automating Operation.....	18
4.2	Starting by Command Line.....	18
4.2.1	Starting from the DOS prompt.....	18
4.2.2	Starting from Run in the Start menu. ....	18
4.2.3	Starting from a Windows shortcut.....	18
4.3	Command Line Options .....	18
4.3.1	Adding command line options .....	18
4.3.2	Command line options table for the TM FontRunner .....	19
4.4	Examples of Command Line Options.....	19

# 1 Introduction

## 1.1 Manual Objective

This manual explains the operation and installation of the TM FontRunner for Windows.

## 1.2 Construction of this Manual

Chapter 2: Explains how to install this utility.

Chapter 3: Explains how to execute functions with this utility.

Chapter 4: Explains how to use this utility efficiently.

## 1.3 Utility Functions

The TM FontRunner for Windows makes the following repair processes easy.

- ☐ Create the font pattern.
- ☐ Edit the font pattern.
- ☐ Save the font pattern to the file.
- ☐ Upload the font pattern from the printer.
- ☐ Download the font pattern to the printer.
- ☐ Copy and paste the BMP data.
- ☐ Print the font pattern (Terminal Printer).
- ☐ Print the font pattern (TM Printer).
- ☐ Mark at version number.
- ☐ Make DM-D font file.
- ☐ Change Command Initial Value

## 1.4 Password

To start the TM FontRunner for Windows, you need the exclusive user ID and password.

There are the following types of user IDs and passwords for the TM FontRunner for Windows.

- ☐ For all users (general password).  
Limited use.
- ☐ For adjusting and customizing (password for customization).  
Can be used for most adjustments and customizing.
- ☐ For repairing and maintenance (password for repairing).  
All functions can be used.

## 1.5 Restrictions

The TM FontRunner for Windows has some restrictions below:

- ❑ Some PCs may encounter a communication error when using this utility if TM-P20, TM-P60II or TM-P80 is set to USB Printer Class.

When using this utility, change the setting to USB Vendor Class.

USB class setting can be checked and changed from TM-P20 Utility, TM-P60II Utility, TM-P80 Utility, or from "Software Setting Mode" of the printer.

- ❑ Some PCs may encounter a communication error when using this utility if the printer is connected to the USB 3.0 port of the PC.

When using this utility, connect the printer to the USB 2.0 port of the PC.

- ❑ It is impossible to get the font data of TM-T88VI and TM-T88VII and TM-H6000V via network.

To get the font data, connect the printer with Built-in USB.

## 2 Installation

This chapter explains installation of the TM FontRunner for Windows and lists necessary items for installation.

Read this chapter before you start installation.

### 2.1 Software and Hardware Environment

TM FontRunner needs one of the following software environments, plus the disk space specified below:

OS:                Windows 10 (32 Bit / 64Bit) (English)  
                     Windows 8.1 (32 Bit / 64Bit) (English)  
                     Windows 8 (32 Bit / 64Bit) (English)  
                     Windows 7 (32 Bit / 64Bit) (English)  
                     Windows VISTA SP1 or later (32 Bit / 64Bit) (English)  
                     Windows XP SP3 or later (32 Bit) (English)  
                     Windows 2000 SP4 (English)

HDD:              Free space of 10MB or more

Communication Port

COMx	<p>* But, XON/XOFF handshaking is not supported. Please change handshaking of TM Printer to DTR/DSR handshaking when you use this utility.</p> <p>* Specify Serial I/F when you use Bluetooth I/F. But, if you execute function of Download or Upload, specify the fastest baud-rate of the products.</p>
LPT1	<p>* On Windows 2000 or Windows XP, you cannot use LPT Port when other printer driver (Terminal Printer etc.) was mounted on same port. Please release port for this utility when you use this utility.</p>
USB	<p>* Installation of the USB driver is necessary when you use the USB I/F.</p> <p>* Use USB driver which is included in OPOS ADK or APD. Use the USB driver which is included in this utility only if you don't use OPOS ADK and APD.</p> <p>* You can use only one USB device at a time.</p>
Ethernet	<p>* Specify the IP Address which is set to the TM Printer.</p> <p>* Specify Ethernet I/F when you use 802.11b Wireless LAN I/F</p>

### 2.2 Installing the Utility

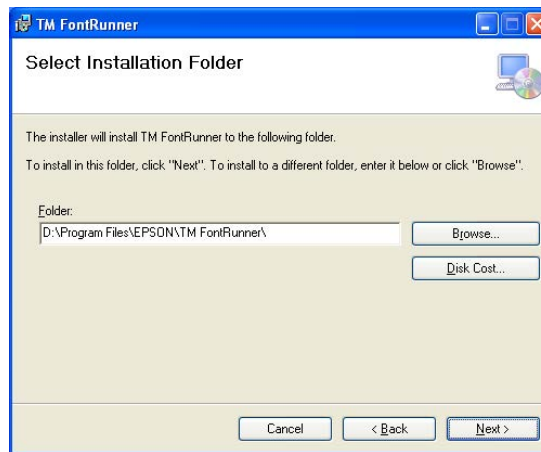
Install the TM FontRunner using the procedure below.

1. Start the OS.
2. Click TMFntRunXXXxx.msi in the package file.

If you want to continue, click the Next button. You can quit the installation by clicking the Cancel button.
3. Clicking Next button, License Agreement Screen is appears.

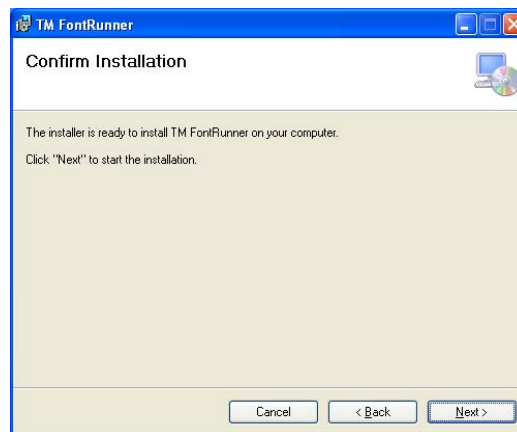
Then you press 'I Agree' and 'Next', the "Select Installation Folder" screen below

appears.



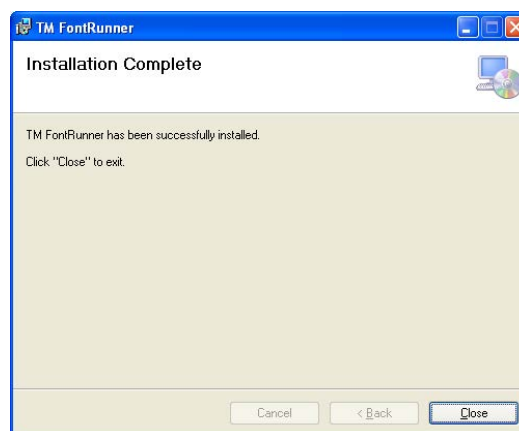
To install TM FontRunner into the folder selected by Browse... button, click the OK button and continue installation. TM FontRunner is installed in that folder. You can quit the installation by clicking the Cancel button.

7. When you click the Next button in above step, the below screen appears.



Click 'Next' button to continue installation.

8. After installation, the below screen appears.



This indicates the utility is finished copying program files. When this screen appears, you can complete the installation by clicking the OK button.

## 2.3 Uninstall

You can uninstall the TM FontRunner with the “Add / Remove Programs” icon in the “Control Panel.” Uninstall TM FontRunner as follows.

1. Double-click “Control Panel” in the “Settings” menu.  
Open the Control Panel.
2. Double-click “Add/Remove Programs.”  
Open “Add / Remove Programs” in the “Control Panel.”
3. Select TM FontRunner.  
Select TM FontRunner from the list.
4. Double-click the Add/Remove button.  
Select the Add/Remove function.
5. Confirm the file deletion.  
Click the ‘Yes’ button when the message asks whether you want to delete files.  
You can quit uninstall by clicking the ‘No’ button.
6. The program files are deleted automatically.



## 3 Operation of TM FontRunner for Windows

### 3.1 Starting the TM FontRunner

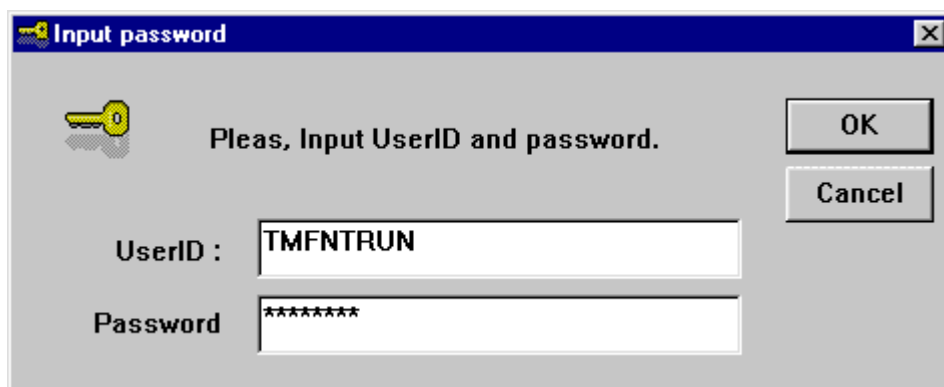
Click the Start button on the Taskbar.

Select "Programs" → "TM FontRunner" → "TM FontRunner"

If you changed the folder when you installed the TM FontRunner, the folder name may be different.

### 3.2 Inputting a Password

When the TM FontRunner is starts, it requires a user ID and password.



Input the user ID and password, and click OK Use alphanumeric characters as the user ID and password. (The utility does not recognize upper- and lowercase letters.)



#### Note:

You cannot use the TM FontRunner without a user ID and the password.

**"TMFNTRUN"** is the generic user ID and

**"T736I2W"** is the generic password.

When you use these, you can use the following functions.

Create a new font pattern.

Save a font pattern.

Print a font pattern to the terminal printer.

Print a downloaded font pattern of space page with TM printer.

Edit a DM-D font file.

Save a DM-D font file.

If you need to use other functions, you need a different user ID and password. Request this from Technical Support.

### 3.3 File Menus

You can use functions as follows at file menu.

File



New

Create a new font pattern.



Open

Open a file of font pattern.

Close

Close an editing file.



**Convert Font Table** Convert the font table to the data including the different dot space.  
 Also if you had created the font data (.FTX file with 7x9 size including 2 dot space) with TM FontRunner ver.1.55 or before for impact dot model (TM-H5000II, TM-H5200, TM-H6000 series, TM-U210, TM-U220, TM-U230, TM-U590, TM-U675, TM-U950), you should convert that .FTX file to 3 dot space by this function, because the .FTX file created with ver.1.55 or before is not correct.



**Save** Save an editing file to a file.  
**Save as...** Save an editing file to other file.



**Print** Print an editing font pattern to the Terminal Printer.  
**Exit** Exit this utility.

#### Edit



**Cut** Cut the selection area of a font pattern to clipboard.



**Copy** Copy the selection area of a font pattern to clipboard.



**Paste** Paste a BMP data of clipboard to selection area.



**Clear** Clear the selection area of font pattern.

**Batch Half dot processing**  
 Executes the half dot processing.

#### View

**Tool Bar** View or hide a Tool bar.  
**Edit Tool Bar** View or hide a Tool bar for Editing.  
**Status Bar** View or hide a Status Bar.

#### Select



**Select Character Code...**  
 Select a Character code that you want to edit.  
 "Select Character Code" screen is displayed.



**Select Pen** Select a Pen tool for editing.



**Select Range** Select a Range tool for editing. (Cut, Copy, Paste and Clear)



**Opacity Overwrite**  
 Overwrite when you paste a BMP data.



**Transparency Overwrite**  
 Overwrite by transparent mode when you paste a BMP data.

#### Tool



**Read from Printer...**  
 Read a font pattern from the Printer.



**Write to Printer...**  
 Write a font pattern to the Printer.




**Batch Download...**  
 Download font patterns to the printer.



**Write to File...** Write a font pattern to a file. (Make a MOX file)  
 MOX file is enciphered Motorola format file.

**Standard page font reference...**  
**Open file...**

- Standard page upload... Refer to a standard font pattern from saved file.
- Gets from Firm Data... Refer to a standard font pattern that is got from TM printer.
- DM-D FLASH Font... Refer to a standard font pattern that is got from DM-D's firmware.
- Gets from Font Data... Get a font pattern of code page of DM-D from a CG.mot or CG2.mot font file.
- Writes in the Font Data... Write an edited font pattern to a file for DM-DFLASH utility or DM-D30 Flash Customization Utility.
-  Test Print... Print a code page 255 or a code page 254 font pattern that were loaded in TM Printer.

Change Command Initial Value...

Set the Command Initial Value for the ESC t and ESC R to the Printer.

Window

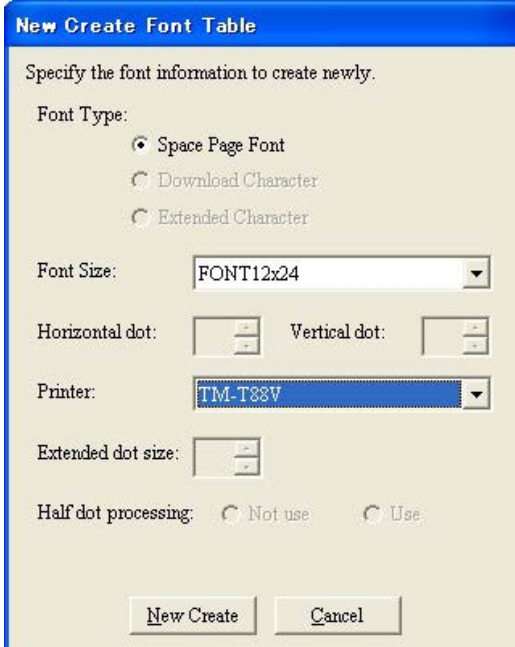
- Cascade Sort windows by cascade.
- Vertical Sort windows by Vertical.
- No. file name Specify the active window.

Help



About... Displays Version Information.

### 3.4 Create Pattern

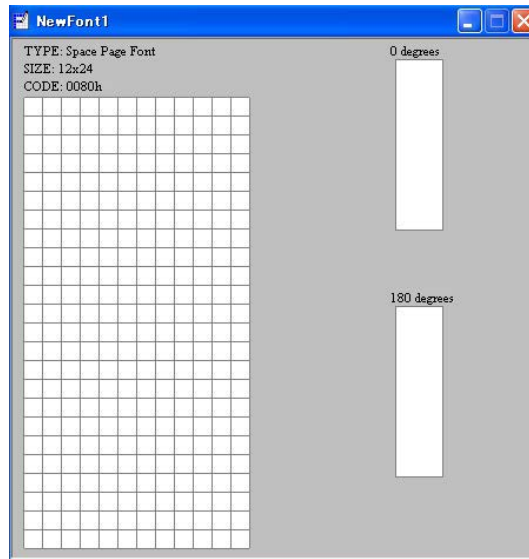


You can choose kinds of the new font. These are Space Page Font, Download Character and Extended Character.

You specify the font size that is loaded on your printer. Refer to this table for font size and printer type.

### 3.5 Edit Pattern

If you choose the 7x9 font, then the following screen is indicated.

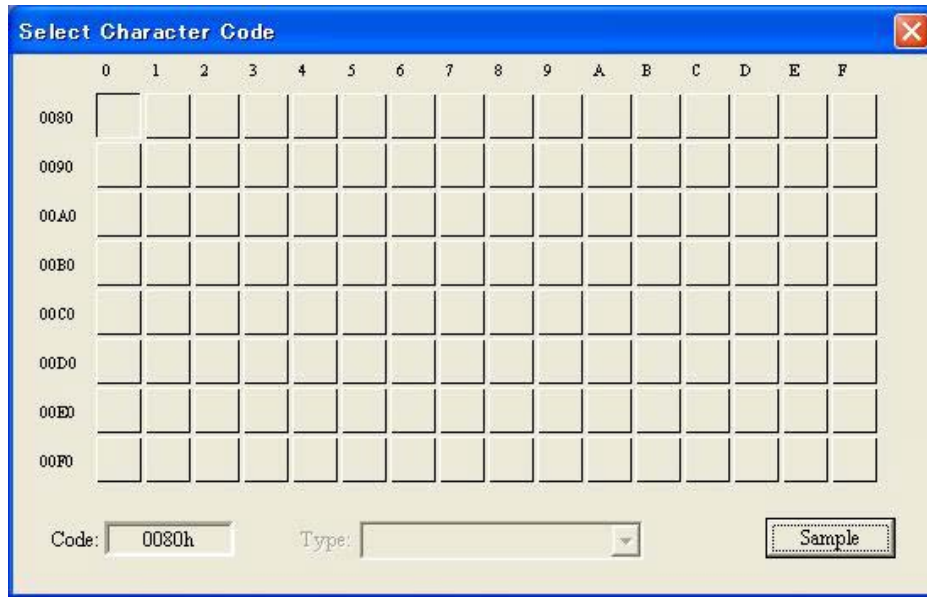


You can mark font pattern by left button of mouse and you can erase font pattern by right button of mouse. And you can use Cut function, Copy function, Paste function and Clear function when you specify the Range Tool by the speed button as follows.

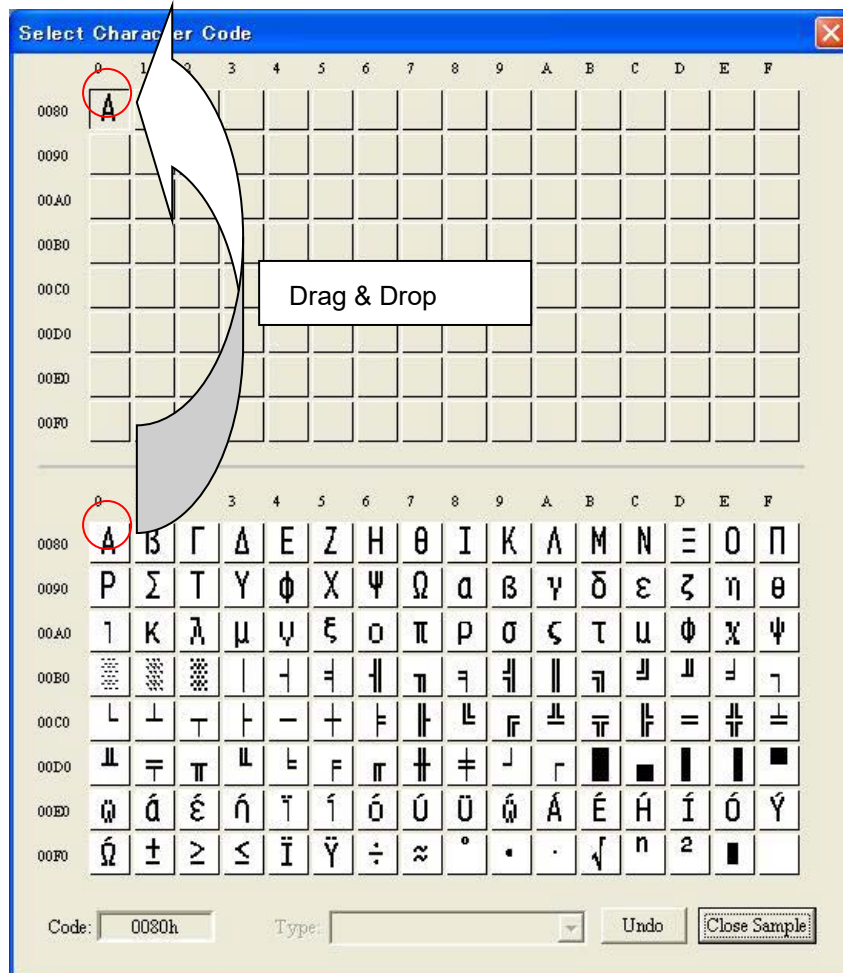
1. Specify the copy area.
2. Use Copy function.
3. Move the active windows to edit window of TM FontRunner.
4. Push the "Paste" button on tool bar.

### 3.6 Select Character Code

If you click the [CODE], then "Select Character Code" window is shown. In this window, you can select the code that you want to create pattern.

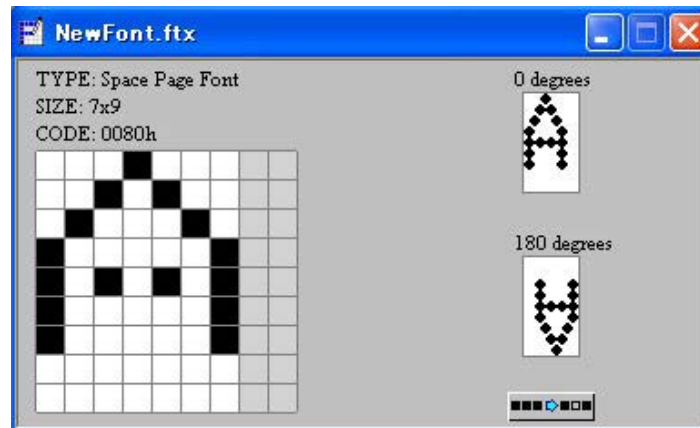


If you click the [Sample], then you can select and display the other character code table as reference. You can drag & drop the each font data from reference table to new table.




### 3.7 Half Dot Font

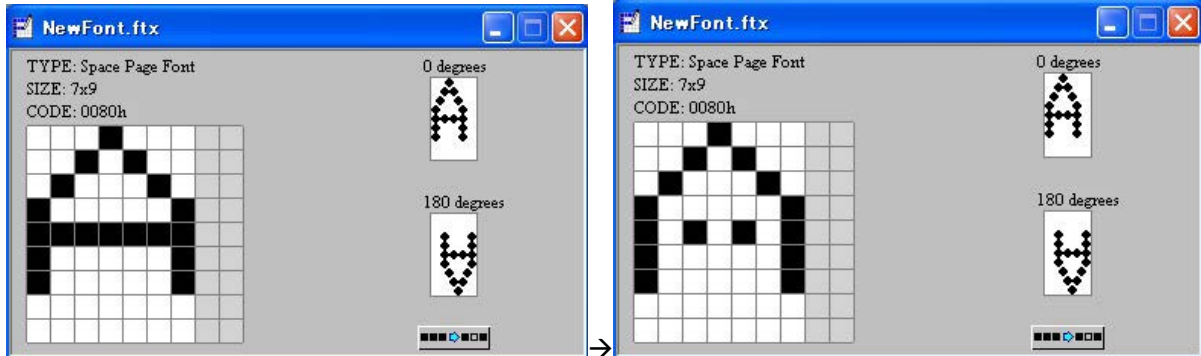
You can see the "Half Dot Pattern" by [>] button in font edit window for the printer that has the "Half Dot Pattern" of dot impact printing.



The fonts that you can see as the "Half Dot Pattern" are 7x9 font and 9x9 font.

### 3.8 (Batch) Half dot processing

You can execute the half dot processing to adjust font pattern for half dot font by file menu or process button () . By this function, the dot that it was located next to each other is cut automatically.



Batch menu adjusts all (80h~FFh) font pattern. And process button adjusts only a font pattern that is shown on the screen.

### 3.9 Save to File

You can save the created font pattern.

Select the "Save" menu or the "Save as..." menu in the file menu.

Extension characters in file name are ".ftx".

### 3.10 Load from File

You can load the font pattern from the saved file.

Select the "Open..." menu in the file menu.

Extension characters in file name are ".ftx", ".mox", ".mot" and ".hex".

".ftx" file is saved by TM FontRunner.

".mox" file is scrambled mot file.

".mot" file is Motorola format file.

".hex" file is hexadecimal format file.

### 3.11 Print to Terminal Printer

You can print the created font pattern to the terminal printer.

Select the "Print" menu in the file menu.

### 3.12 Read Font pattern from TM Printer

You can read the mounted font pattern in the space page of the TM Printer.



The printer that has the selected font is displayed in the "Printer" when you select the Font Size.

The code page that is mounted in its Printer is displayed when you select the Printer.

Select the code page that you want to read.

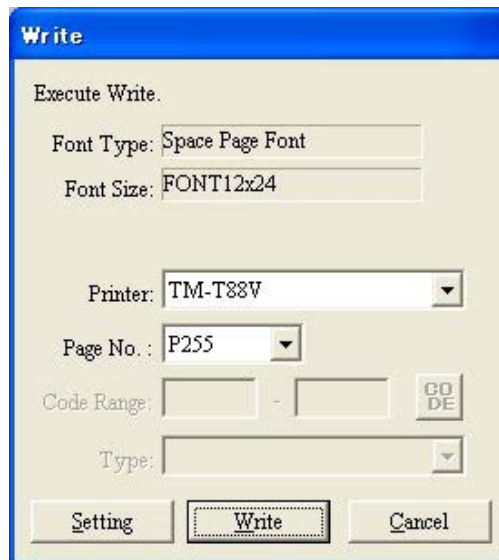
Read the space font pattern from the TM Printer by [Read].

Set the communication parameters for the TM Printer by [Setting].

Select the value that was set with the DIP switches at the TM Printer.

### 3.13 Write Font pattern to TM Printer

You can write the created font pattern to the space page of the TM Printer.



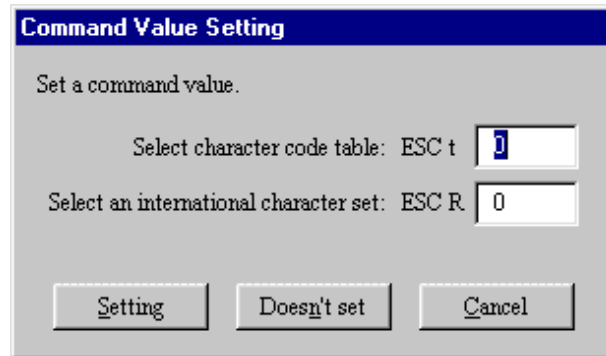
The code page that is mounted in the TM Printer is displayed when you select the Printer.

Select the code page that you want to write.

Write the created font pattern to the TM Printer by [Write].

Set the communication parameters for the TM Printer by [Setting].





You can change the initial value of "ESC t" command and "ESC R" command concerning the particular TM printer in the "command value setting" window.

The TM Printer is started up with specified code page and specified international character if you specify the initial value in this window.

If you want to use "code page 0" and "international character set 0" then click [Doesn't set].



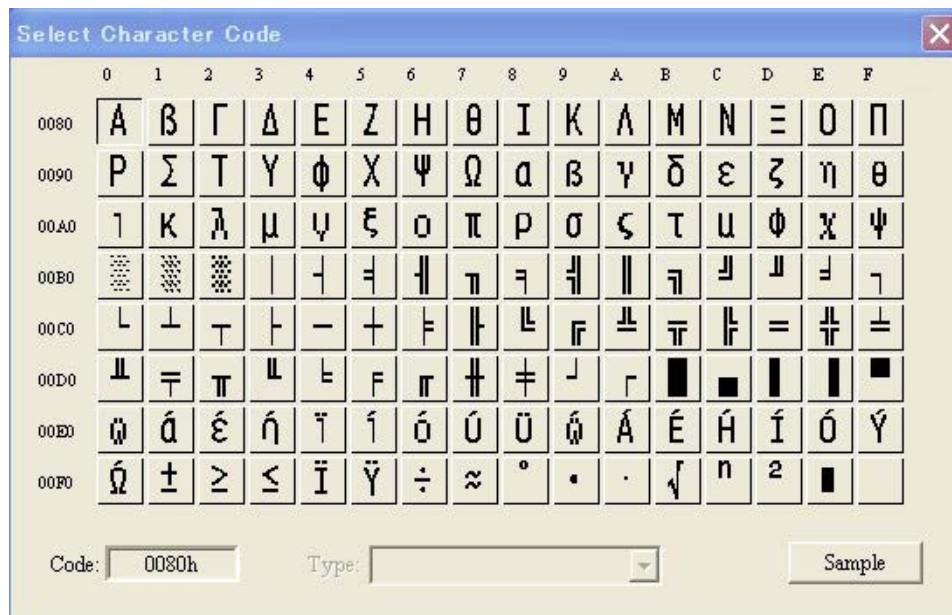
If the font pattern is half dot font and it has some of missing dots, it is adjusted automatically.

### 3.14 Standard Page

You can reference the standard page font from the TM Printer or from the Firmware. By sort and copy and paste, you can create the code pages that are not defined in the TM Printer easily.

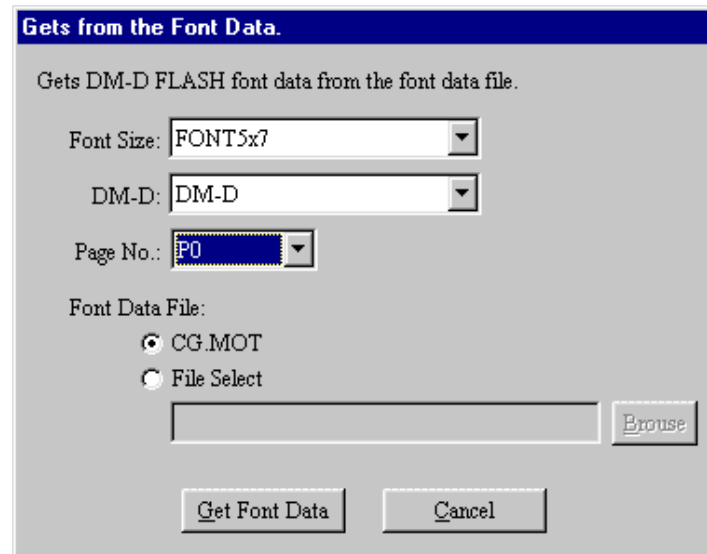
And you can reference the standard page font from the firmware file for the TM Printer too.

You can save a font pattern of standard page to a file.



### 3.15 DM-D Font

Select the "Tool" menu - "DM-D FLASH Font" - "Gets from Font Data". You can reference a font page for DM-D or DM-D30. And edit it.

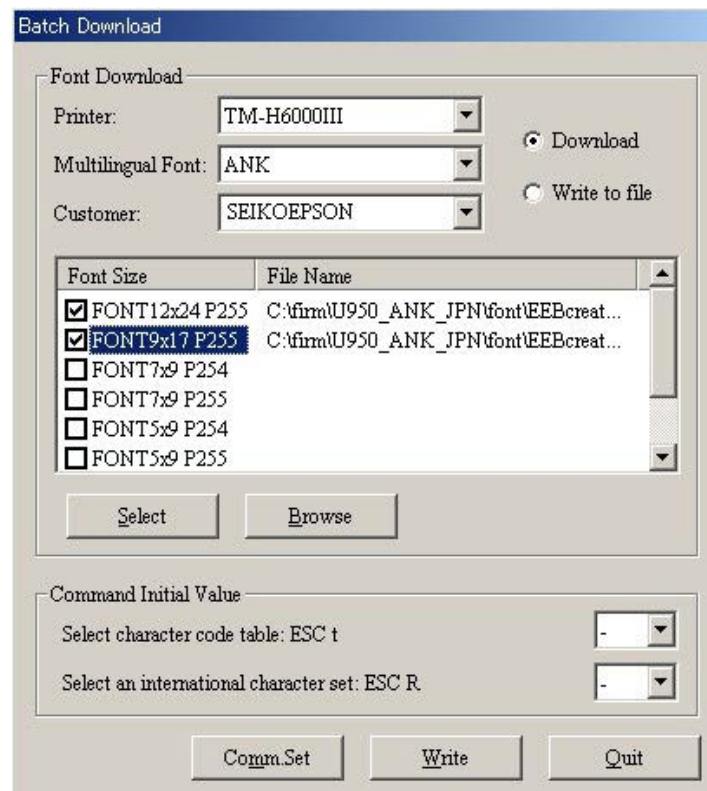


By the "Writes in the Font Data" menu, you can return to other area its font page.

You can use a created DM-D font file for the DM-DFLASH or DM-D30 Flash Customization Utility. Refer to manual of Utility for using DM-D file.

### 3.16 Batch Download

Select the "Tool" menu – "Batch download". You can download all font patterns for TM printer by the practice of one time.



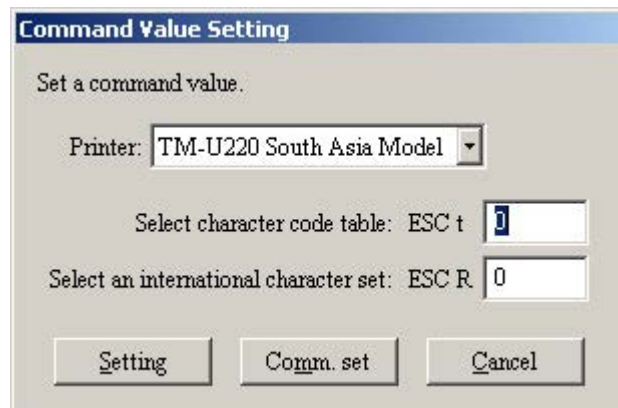
All fonts that TM printer has as space pages are listed in the screen. You can specify the font file

to each font by [Select] button. And confirm font pattern by [Browse] button.

And you can change the initial value of "ESC t" command and "ESC R" command concerning the particular TM printer by "Command Initial Value" in the same menu.

When you click "Write" button, execute this batch download. Then this setting information is registered in the windows registry file. And if you input in "Customer" edit box of batch download menu, its input name is registered as the folder name. You can check the information executed for the each customer name.

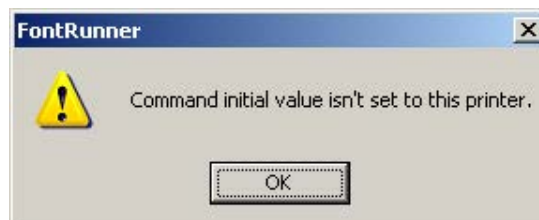
### 3.17 Change Command Initial Value



You can change the initial value of "ESC t" command and "ESC R" command concerning the particular TM printer by the "Change Command Initial Value" menu.

The TM Printer is started up with specified code page and specified international character if you specify the initial value in this window.

If you want to use "code page 0" and "international character set 0" then click [Doesn't set].

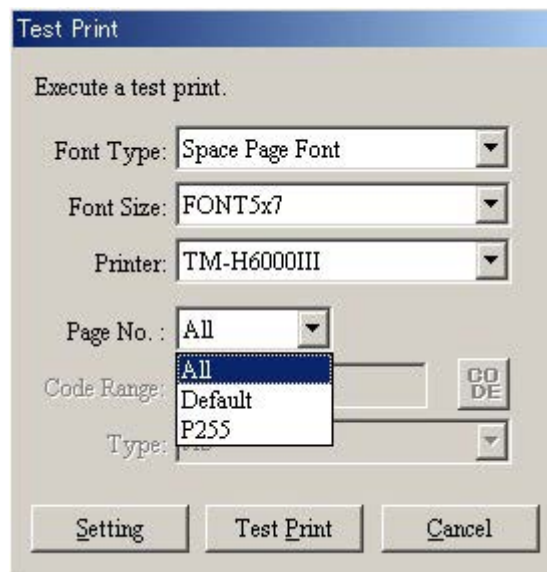


If the printer does not support this function of tool, the above message is displayed.

**Note:**

You need to set the Dip switch 2-6 to OFF by manually before executing this function when changing the default code page on the TM-U950 if the setting 2-6 is OFF. And after finishing executing it, please change it to the last setting.

### 3.18 Test Print



You can print the each font table registered for the each code page.



If you select "All" as the code page No. including the page number not supported for the specific font size, the above message may be displayed. Then you need to select the page No. except "All".

## 4 Options

### 4.1 Automating Operation

By adding a command line option when you start the TM FontRunner for Windows, you can automate your keyboard input or mouse movements somewhat.

### 4.2 Starting by Command Line

You can start the TM FontRunner in any of the following ways.

- From the DOS prompt.
- From "Run in the Start menu".
- From a "Windows shortcut".

#### 4.2.1 Starting from the DOS prompt

To start TM FontRunner from the DOS prompt, use the following steps.

1. From Windows, start the DOS prompt.
2. Change to the directory where TM FontRunner was installed.  
For example, **cd c:\Program Files\EPSON\TM FontRunner**
3. Start the TM FontRunner program.  
For example, run **TM FontRunner**  
TMCUTOM starts.

#### 4.2.2 Starting from Run in the Start menu.

To start TM FontRunner from Run in the Start menu, use the following steps.

1. Click Start in the Taskbar.
  2. Select Run....
  3. Click the Browse... button.
  4. Move to the folder where TM FontRunner was installed.
  5. Select **TMFNTRUN.EXE**, and click the Open button.
  6. Click the OK button.
- TM FontRunner starts.

#### 4.2.3 Starting from a Windows shortcut

To create a shortcut and start TM FontRunner from the shortcut, follow the steps below.

1. Start Windows Explorer
  2. Select File -> New -> Shortcut.
  3. Click the Browse... button.
  4. Move to the folder where TM FontRunner was installed.
  5. Select **TMFNTRUN.EXE**, and click the Open button.
  6. Click the Next button.
  7. Confirm the shortcut name, select an icon, and click the Finish button.
  8. Double-click the shortcut icon that was created.
- TM FontRunner starts.

### 4.3 Command Line Options

#### 4.3.1 Adding command line options

To add command line options to the command line, follow the steps below.

1. For the DOS prompt or Run:  
Add the command line options to the command line.
2. For shortcuts:  
Right-click the shortcut and open its properties. Click the Shortcut tab. Add the command line options to the end of the file name in the "Target:" field. Separate each command line option by a space. The maximum number of the characters for the command line and options must be less than 255 characters.  
Creating command line options.

Command line options consist of the following:

Separator	Space
Start option	Minus or slash
Option	Two alphabetic characters
Parameter	Alphabetic characters (a – z, A-Z)
	Numbers (0 – 9)
	Symbols, except minus or slash

#### 4.3.2 Command line options table for the TM FontRunner

The graphical (GUI) version “TmFntRun.exe” has the following command line options:

No	Options	Parameters (Default Value)	Function
1	if	COM1, COM2, COM3, COM4, LPT1, TMUSB IP_Address (COM1)	Specifies the port you use. Only existing ports can be specified. Specify the IP Address with the format “xxx.xxx.xxx.xxx”.
2	br	24, 48, 96, 192, 384, 576, 115200 (96)	Specifies the baud rate used for the serial port. Values are 100 times the number set.
3	pb	N, E, O (N)	Specifies the parity bit used for serial port.
4	sb	1, 2 (1)	Specifies the stop bit used for serial port.
5	id	User ID (Not defined)	Specifies the user ID.
6	dl	8	Specifies the data bits used for serial port.
7	pw	Password (Not defined)	Specifies the password.
8	ne	None	Specifies the negotiation.



#### Note:

Use only alphanumeric characters for command line options.  
Other definitions of command line options are ignored.  
The default value is used when you use an unacceptable definition for a parameter.

## 4.4 Examples of Command Line Options

You can automate the start-up operation as follows with command line options.

1. Omit input of a user ID and password.

**TMFNTRUN -idTMFNTRUN /pwT736I2W**

This command line omits password input and starts from the Communication Setting screen.

- ☐ There is no distinction between upper- and lowercase.
- ☐ Minus or slash is used as the symbol to start the option.
- ☐ If there is a mistake in the user ID or password in the command line options, the screen for input of a password is displayed.

2. Sets COM2 to 19200 bps at the host.

**TMFNTRUN -idTMFNTRUN /pwT736I2W -ifCOM2 -br192**

This command line starts TM FontRunner with a baud rate for COM2 of 19200 bps, and omits the screen for input of a password.

- ☐ The baud rate set at the TM FontRunner must be 19200 bps.