

Epson Projector Content Manager

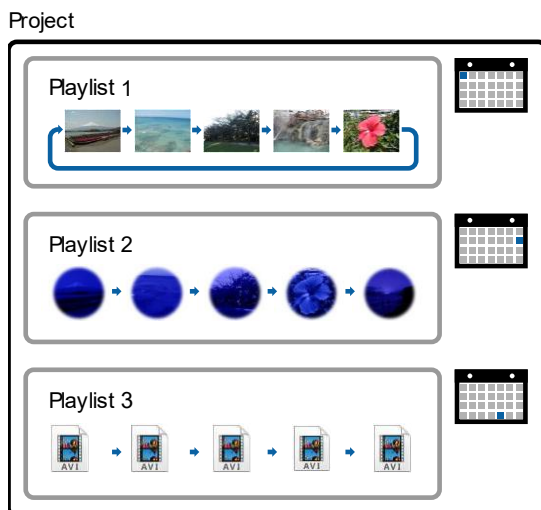
Software Overview

Software Name	Epson Projector Content Manager
Ver	1.31
Release Date	2024/10/8
Supported OS	<ul style="list-style-type: none"> Windows 10 (32bit/64bit) Windows 11 (64bit)
File size	157 MB

Epson Projector Content Manager Features

The Epson Projector Content Manager software allows you to add images and movies to playlists, and save them on an external storage device. Inserting the storage device into the projector, you can easily project your playlist content without using a cable connection.

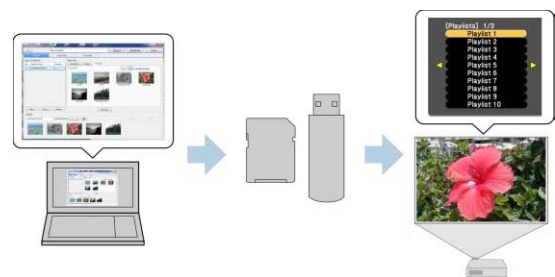
■ Editing Playlist



■ Adding Effects to a Playlist



■ Exporting a Project to an External Storage Device



Software Release History

Ver	Release Date	Update Contents
1.31	2024/10/8	-Supported Windows 11 SAC (Smart App Control).
1.30	2024/4/30	- A usage survey function has been added. - Application update function has been added. - Fixed other bugs.
1.24	2024/3/19	- Addressed a problem that prevented playback of projects on certain models.
1.23	2023/11/6	- Revised the end-user license agreement (EULA).
1.20	2020/5/22	- Added saving method of the playlist. - Added the preview function.
1.10	2019/9/10	- Supports video conversion of 4K videos.

EPSON is a registered trademark of Seiko Epson Corporation. Windows is a trademark of Microsoft Corporation in the United States and/or other countries. Other product names used herein are also for identification purposes only and may be trademarks of their respective owners. Epson disclaims any and all rights in those marks.

This information is subject to change without notice. Copyright(C) 2018-2024 Seiko Epson Corporation All rights reserved.