

Epson Projector Professional Tool

Software Overview

Software Name	Epson Projector Professional Tool
Ver	1.60
Release Date	2025/5/30
Supported OS	<ul style="list-style-type: none"> Windows 10 (32bit/64bit) Windows 11 (64bit)
File size	54.6 MB

Epson Projector Professional Tool Features

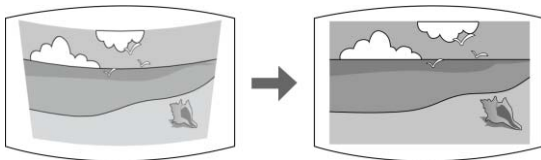
The Epson Projector Professional Tool software allows you to adjust and control images projected from network projectors, and monitor the status of the projectors using your computer.

Depending on the firmware version, you may encounter some limitations when using this software.

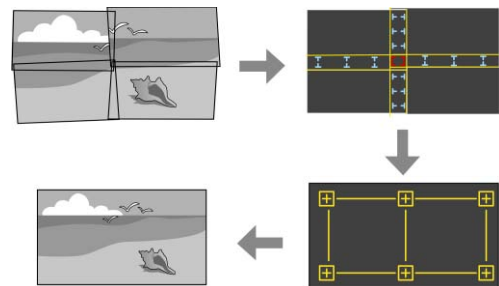
■ Lens Control Feature



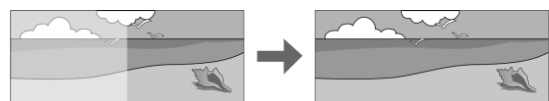
■ Geometry Correction Feature



■ Blending Assist Feature



■ Screen Matching Feature



Software Release History

Ver	Release Date	Update Contents
1.60	2025/5/30	Supports the following functions on camera assist. <ul style="list-style-type: none"> Geometric distortion correction assist stacking function supports complex surface projection. Automatic black correction accuracy improvement option in screen matching function.
1.57	2025/3/10	Supports the EB-L890E series.
1.56	2024/9/6	Supports the following functions on camera assist. <ul style="list-style-type: none"> Blend width ratio input supported

		<ul style="list-style-type: none"> - Shape adjustment values before camera measurement are retained
1.55	2024/3/25	Supports the EB-PQ20/22 and CB-PQ20/22 series. The installation method has been changed.
1.52	2024/2/16	Supports the following functions on camera assist. <ul style="list-style-type: none"> - manual mask function - 16:9 content selection function
1.51	2023/10/13	Revised the end-user license agreement (EULA).
1.50	2023/5/2	Supports the following functions. <ul style="list-style-type: none"> - Camera Assist for curved surface - Geometry Correction Assist for Stacking & Blending
1.41	2022/4/8	Supports the following functions of the EB/CB-PU22/PU21 series <ul style="list-style-type: none"> - Supported Black level when edge blending function is off - Supported "Energy Saving Mode"
1.40	2021/5/25	The following functions are improved. <ul style="list-style-type: none"> - Geometry Correction - Projector File - Geometry File - Lens Control - Layout Supports portrait display. Added The registration/execution function of arbitrary control.
1.31	2020/7/31	The following functions are improved. <ul style="list-style-type: none"> - Camera Assist - Geometry Correction - Projector File - Lens Control
1.30	2019/10/24	

EPSON is a registered trademark of Seiko Epson Corporation. Windows is a trademark of Microsoft Corporation in the United States and/or other countries. Other product names used herein are also for identification purposes only and may be trademarks of their respective owners. Epson disclaims any and all rights in those marks.

This information is subject to change without notice. © 2017–2025 Seiko Epson Corporation All rights reserved.