

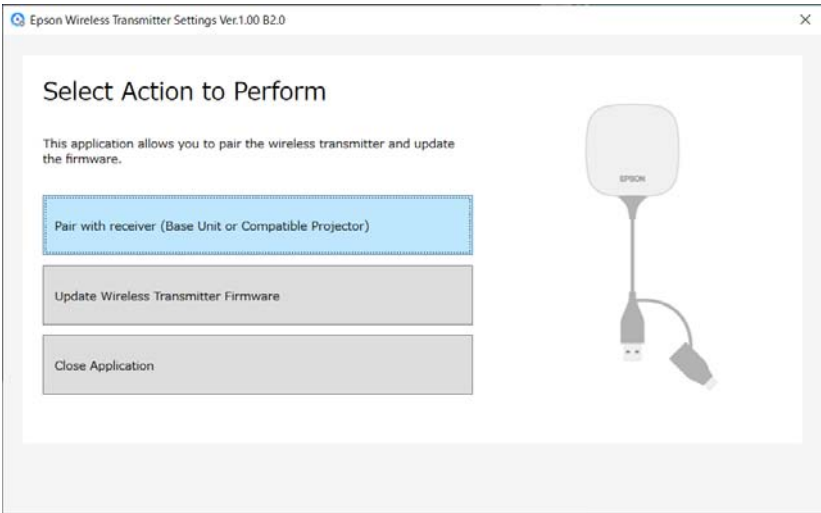
Epson Wireless Transmitter Settings

Software Overview

Software Name	Epson Wireless Transmitter Settings
Ver	1.02
Release Date	2024/10/8
Supported OS	<ul style="list-style-type: none">Windows 10(32bit/64bit)Windows 11(64bit)
File size	5.49 MB

Epson Wireless Transmitter Settings Features

The Epson Wireless Transmitter Settings software allows you to perform pairing between the transmitter and the receiver such as a base unit or a supported projector, and update firmware for the transmitter. You can also control the connection bandwidth of data when transferring to the receiver.



Software Release History

Ver	Release Date	Update Contents
1.02	2024/10/8	Supported Windows 11 SAC(Smart App Control).
1.01	2023/11/6	Revised the end-user license agreement (EULA).
1.00	2021/4/6	

EPSON is a registered trademark of Seiko Epson Corporation. Windows is a trademark of Microsoft Corporation in the United States and/or other countries. Other product names used herein are also for identification purposes only and may be trademarks of their respective owners. Epson disclaims any and all rights in those marks.
This information is subject to change without notice. © Seiko Epson Corporation 2021–2024 All rights reserved.