

# Epson Projector Management

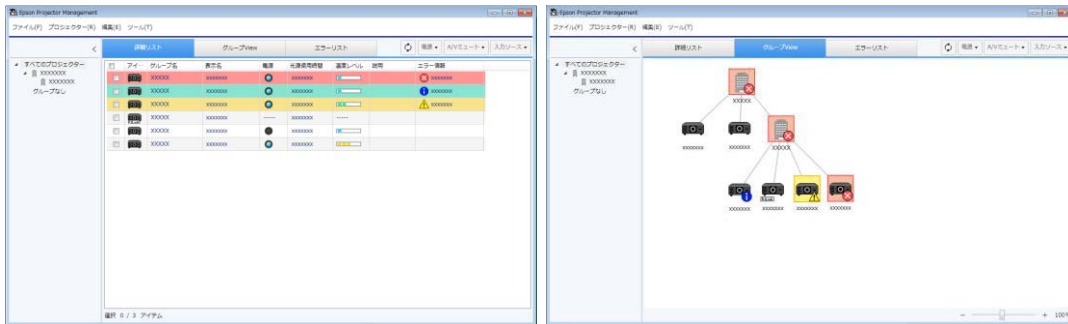
## Software Overview

Software Name	Epson Projector Management
Ver	5.55
Release Date	2025/8/21
Supported OS	<ul style="list-style-type: none"> <li>Windows 10 (32bit/64bit)</li> <li>Windows 11 (64bit)</li> </ul>
File size	137.0 MB

## Epson Projector Management Features

The Epson Projector Management software allows you to check the status of multiple networked projectors and perform various projector operations from your computer.

### ■ Monitoring the status of projectors



### ■ Controlling the projectors

You can turn projectors on or off, or change input sources for individual projectors or projector groups. You can schedule various projector events to occur automatically on the specified date and time.

### ■ Updating the projector firmware

You can update firmware for a projector over a wired network. You can also schedule when the firmware updates will take place.

### ■ Copying the projector menu settings

Once you select a projector's menu settings, you can copy the settings to multiple projectors of the same type in a batch setup operation.

## Software Release History

Ver	Release Date	Update Contents
5.55	2025/8/21	Fixed a bug.
5.54	2025/3/5	Fixed a bug.
5.53	2024/9/27	<ul style="list-style-type: none"> <li>- Supported Windows 11 SAC(Smart App Control).</li> <li>- Changed LocalDB to SQL Server 2022 Express.</li> </ul>
5.52	2023/12/14	Fixed a bug.
5.51	2023/11/6	Revised the end-user license agreement (EULA).
5.50	2023/06/27	Add support models.
5.43	2022/12/20	Partially changed the format of the exported file.
5.42	2022/9/27	Fixed a bug.
5.41	2021/8/23	Fixed a bug.
5.40	2021/4/23	<ul style="list-style-type: none"> <li>- Improved communication between projectors.</li> <li>- Supported replacement of projectors.</li> </ul>
5.30	2020/2/21	<ul style="list-style-type: none"> <li>- The following functions are improved.</li> <li>Firmware update function</li> <li>Schedule function</li> </ul>
5.22	2019/9/10	

EPSON is a registered trademark of Seiko Epson Corporation. Windows is a trademark of Microsoft Corporation in the United States and/or other countries. Other product names used herein are also for identification purposes only and may be trademarks of their respective owners. Epson disclaims any and all rights in those marks.

This information is subject to change without notice. ©Seiko Epson Corporation 2017-2025. All rights reserved.