

EPSON

Projector Manual Update Information

Multimedia Projector

**EB-755F
EB-750F
EB-735Fi
EB-735F
EB-725Wi
EB-725W
EB-720**

Introduction to the Updated Firmware 4

Features of Firmware Version 1.20 5

- Updates to Projector Menus (Version 1.20) 5
- Updates to User Operations (Version 1.20) 5

Features of Firmware Version 2.00 6

- Updates to Projector Menus (Version 2.00) 6
- Updates to User Operations (Version 2.00) 6

Features of Firmware Version 2.10 7

- Updates to Projector Menus (Version 2.10) 7

Features of Firmware Version 2.20 8

- Updates to Projector Menus (Version 2.20) 8
- Updates to User Operations (Version 2.20) 8

Features of Firmware Version 2.35 9

- Updates to Projector Menus (Version 2.35) 9

Features of Firmware Version 2.40 10

- Updates to Projector Menus (Version 2.40) 10
- Updates to User Operations (Version 2.40) 10

Features of Firmware Version 2.41 11

- Updated Projector Menus (Version 2.41) 11

Details of Updated Firmware 12

Details of Updated Projector Menus (Version 1.20) 13

- Menu Color and Toolbar Color 13

Details of User Operation Change (Version 1.20) 14

- Additional Whiteboard Zoom Options 14
- Upgrade for Crestron Connected 14

Details of Updated Projector Menus (Version 2.00) 15

- A/V Output 15

- No-signal Screen 15
- Home Screen Auto Disp. 15
- Standby Mode and Quick Startup 16
- Transmitter Settings 16
- Wireless LAN Sys. 17

Details of User Operation Change (Version 2.00) 18

- Using the Wireless Presentation System to Connect Windows/Mac Computers 18
- Setting Up the Wireless Presentation System for the First Time 18
- Projecting with the Wireless Presentation System 19

Details of Updated Projector Menus (Version 2.10) 20

- A/V Output 20
- Auto Power On 20
- Power On Trigger 21
- Standby Mode and Quick Startup 21
- Transmitter Settings 22

Details of Updated Projector Menus (Version 2.20) 23

- Mouse icon on Toolbar 23

Details of User Operation Change (Version 2.20) 24

- Added Mouse Button and Status Indicator to the Toolbar 24

Details of Updated Projector Menus (Version 2.35) 25

- Added Touch Unit Setup (Manual) setting to the Touch Unit menu 25

Details of Updated Projector Menus (Version 2.40) 26

- Access Control and Secondary Connections 26

Details of User Operation Change (Version 2.40) 27

- Notes for Miracast Connection 27
- Added Delete Block List Icon to the Home Screen 27

Details of Updated Projector Menus (Version 2.41) 28

- Access Control and Secondary Connections 28

Appendix **29**

Optional Accessories **30**

For Wireless Connection 30

Notices **31**

Laser Safety Information 31

Copyright Notice 36

Trademarks 37

Copyright Attribution 37

Introduction to the Updated Firmware

Epson periodically provides firmware updates to enhance your projector features and to address issues of performance. Refer to these sections to learn more about the updated features within each firmware version.

▶ Related Links

- ["Features of Firmware Version 1.20" p.5](#)
- ["Features of Firmware Version 2.00" p.6](#)
- ["Features of Firmware Version 2.10" p.7](#)
- ["Features of Firmware Version 2.20" p.8](#)
- ["Features of Firmware Version 2.35" p.9](#)
- ["Features of Firmware Version 2.40" p.10](#)
- ["Features of Firmware Version 2.41" p.11](#)

Refer to these sections for a summary of the updated features of projector firmware version 1.20.

▶▶ Related Links

- "Updates to Projector Menus (Version 1.20)" [p.5](#)
- "Updates to User Operations (Version 1.20)" [p.5](#)

Updates to Projector Menus (Version 1.20)

The following projector menus have changed in firmware version 1.20:

Display menu

- The **Menu Color** setting is added.

Interactive menu (EB-735Fi/EB-725Wi)

- The **Toolbar Color** setting is added.

▶▶ Related Links

- "Menu Color and Toolbar Color" [p.13](#)

Updates to User Operations (Version 1.20)

The following projector operations have changed in firmware version 1.20:

- You can use additional **Zoom** options to change the whiteboard zoom ratio to fit width or fit height during split screen projection (EB-735Fi/EB-725Wi).
- The Crestron Connected feature bundled in the projector is upgraded.

▶▶ Related Links

- "Additional Whiteboard Zoom Options" [p.14](#)
- "Upgrade for Crestron Connected" [p.14](#)

Refer to these sections for a summary of the updated features of projector firmware version 2.00.

▶▶ Related Links

- "Updates to Projector Menus (Version 2.00)" [p.6](#)
- "Updates to User Operations (Version 2.00)" [p.6](#)

Updates to Projector Menus (Version 2.00)

The following projector menus have changed in firmware version 2.00 for newly added optional wireless presentation system:

Signal I/O Menu

- The display condition of the **A/V Output** setting is added.

Display Menu

- A setting value is added to the **No-signal Screen** setting.
- The display condition of the **Home Screen Auto Disp.** setting is added.

Operation Menu

- The display condition of the **Standby Mode** setting and the **Quick Startup** setting is added.

Network Menu

- The **Transmitter Settings** are added.

Network Settings Menu

- The **Wireless LAN Sys.** setting is added.

▶▶ Related Links

- "A/V Output" [p.15](#)
- "No-signal Screen" [p.15](#)
- "Home Screen Auto Disp." [p.15](#)
- "Standby Mode and Quick Startup" [p.16](#)
- "Transmitter Settings" [p.16](#)
- "Wireless LAN Sys." [p.17](#)

Updates to User Operations (Version 2.00)

You can project with the newly added optional wireless presentation system in firmware version 2.00.

The wireless presentation system (ELPWP10) includes two wireless transmitters (ELPWT01) and one wireless LAN module (ELPAP11).

See the *Epson Wireless Presentation System User's Guide* for details.

▶▶ Related Links

- "Using the Wireless Presentation System to Connect Windows/Mac Computers" [p.18](#)

Refer to these sections for a summary of the updated features of projector firmware version 2.10.

▶ Related Links

- "Updates to Projector Menus (Version 2.10)" [p.7](#)

Updates to Projector Menus (Version 2.10)

The following projector menus have changed in firmware version 2.10 to support the Microsoft Teams Rooms:

Signal I/O Menu

- The display condition for the **A/V Output** setting is added.

Operation Menu

- The feature of the **Auto Power On** setting is changed.
- The **Power On Trigger** setting is added.
- The display conditions for the **Standby Mode** and **Quick Startup** settings are added.

Network Menu

- The display condition for the **Auto Power On** setting in the setting for the **Transmitter Settings** is added.

Refer to these sections for a summary of the updated features of projector firmware version 2.20.

▶▶ Related Links

- "Updates to Projector Menus (Version 2.20)" [p.8](#)
- "Updates to User Operations (Version 2.20)" [p.8](#)

Updates to Projector Menus (Version 2.20)

The following projector menus have changed in firmware version 2.20:

Interactive menu (EB-735Fi/EB-725Wi)

- The **Mouse icon on Toolbar** setting is added.

▶▶ Related Links

- "Mouse icon on Toolbar" [p.23](#)

Updates to User Operations (Version 2.20)

The following projector operations have changed in firmware version 2.20:

- A mouse button and status indicator are added to the interactive toolbar (EB-735Fi/EB-725Wi).

▶▶ Related Links

- "Added Mouse Button and Status Indicator to the Toolbar" [p.24](#)

Refer to these sections for a summary of the updated features of projector firmware version 2.35.

▶ **Related Links**

- "Updates to Projector Menus (Version 2.35)" [p.9](#)

Updates to Projector Menus (Version 2.35)

The following projector menus have changed in firmware version 2.35:

Touch Unit menu (EB-735Fi/EB-725Wi)

- The **Touch Unit Setup (Manual)** setting is added.
- The **Touch Unit Setup** setting is changed to **Touch Unit Setup (Auto)**.

▶ **Related Links**

- "Added Touch Unit Setup (Manual) setting to the Touch Unit menu" [p.25](#)

Refer to these sections for a summary of the updated features of projector firmware version 2.40.

▶▶ Related Links

- "Updates to Projector Menus (Version 2.40)" [p.10](#)
- "Updates to User Operations (Version 2.40)" [p.10](#)

Updates to Projector Menus (Version 2.40)

The following projector menus have been changed in this firmware version.

Network > Network Settings > Network Projection > Screen Mirroring

- **Interrupt Connection** has been deleted
- **Access Control** has been added
- **Secondary Connections** has been added

▶▶ Related Links

- "Access Control and Secondary Connections" [p.26](#)

Updates to User Operations (Version 2.40)

The following projector operations have changed in this firmware version.

- You can force the device to disconnect during Miracast connection.
- The **Delete Block List** icon has been added to the Home screen.

▶▶ Related Links

- "Notes for Miracast Connection" [p.27](#)
- "Added Delete Block List Icon to the Home Screen" [p.27](#)

Refer to these sections for a summary of the updated features of projector firmware version 2.41.

▶ **Related Links**

- "Updated Projector Menus (Version 2.41)" [p.11](#)

Updated Projector Menus (Version 2.41)

The following projector menus have been changed in this firmware version.

Network > Network Settings > Network Projection > Screen Mirroring

- The display condition for **On** in the **Access Control** menu has been added.
- **Interruptions OK** has been added to **Secondary Connections**.

▶ **Related Links**

- "Access Control and Secondary Connections" [p.28](#)

Details of Updated Firmware

Check these sections for the updated details of firmware.

► Related Links

- "Details of Updated Projector Menus (Version 1.20)" [p.13](#)
- "Details of User Operation Change (Version 1.20)" [p.14](#)
- "Details of Updated Projector Menus (Version 2.00)" [p.15](#)
- "Details of User Operation Change (Version 2.00)" [p.18](#)
- "Details of Updated Projector Menus (Version 2.10)" [p.20](#)
- "Details of Updated Projector Menus (Version 2.20)" [p.23](#)
- "Details of User Operation Change (Version 2.20)" [p.24](#)
- "Details of Updated Projector Menus (Version 2.35)" [p.25](#)
- "Details of Updated Projector Menus (Version 2.40)" [p.26](#)
- "Details of User Operation Change (Version 2.40)" [p.27](#)
- "Details of Updated Projector Menus (Version 2.41)" [p.28](#)

Refer to these sections for details about projector menu changes.

▶ Related Links

- "Menu Color and Toolbar Color" [p.13](#)

Menu Color and Toolbar Color

The **Menu Color** setting is added to the **Display** menu and the **Toolbar Color** setting is added to the **Interactive** menu.

Previous Display Menu (Version 1.00)

No setting is available.

New Display and Interactive Menu (Version 1.20)

Top menu	Sub menu	Items or setting values
Display	Menu Color	<ul style="list-style-type: none">• Black• White
Interactive (EB-735Fi/ EB-725Wi)	Toolbar Color	<ul style="list-style-type: none">• Black• White

The **Menu Color** setting specifies the color theme of the Home screen and projector menu system. The **Toolbar Color** setting specifies the interactive toolbar color.

Refer to these sections for details on changes to user operations.


▶ Related Links

- "Additional Whiteboard Zoom Options" [p.14](#)
- "Upgrade for Crestron Connected" [p.14](#)

Additional Whiteboard Zoom Options


You can use additional **Zoom** options to change the whiteboard zoom ratio to fit width or fit height during split screen projection (EB-735Fi/EB-725Wi). While enlarging the image, you can drag the screen to move the displayed position.



Previous Zoom Operation (Version 1.00)

When you press the  button at the left of the whiteboard screen, the following zoom options are available.

-  : Reduces the image.
-  : Enlarges the image.
-  : Returns to the original size.
-  : Enlarges the selected area.

New Zoom Operation (Version 1.20)

When you press the  button at the left of the whiteboard screen, the following zoom options are available in addition to the previous options.

-  : Change the zoom ratio to fit width to display the whole whiteboard screen during split screen projection.
-  : Change the zoom ratio to fit height to display the full-size whiteboard screen during split screen projection.

Upgrade for Crestron Connected

The Crestron Connected feature bundled in the projector is upgraded. For information on Crestron Connected, visit the Crestron Web site.

Previous Crestron Connected (Version 1.00)

The projector bundles Crestron Connected V1.

New Crestron Connected (Version 1.20)

The projector bundles Crestron Connected V2.

Refer to these sections for details about projector menu changes.

► **Related Links**

- "A/V Output" [p.15](#)
- "No-signal Screen" [p.15](#)
- "Home Screen Auto Disp." [p.15](#)
- "Standby Mode and Quick Startup" [p.16](#)
- "Transmitter Settings" [p.16](#)
- "Wireless LAN Sys." [p.17](#)

A/V Output

The display condition for the AV Output setting is added.

Previous Signal I/O Menu (Version 1.20)

Top menu	Sub menu	Display condition
Signal I/O	A/V Output	Setting is only displayed when Quick Startup is set to Off in the projector's Operation menu.

New Signal I/O Menu (Version 2.00)

Top menu	Sub menu	Display condition
Signal I/O	A/V Output	Setting is only displayed in the following cases: <ul style="list-style-type: none"> • Quick Startup is set to Off in the projector's Operation menu. • Auto Power On is set to Off in the projector's Network menu.

No-signal Screen

Graduation is added as a setting value of the No-signal Screen setting.

Previous Display Menu (Version 1.20)

Top menu	Sub menu	Items or setting values
Display	No-signal Screen	Black Blue Logo

New Display Menu (Version 2.00)

Top menu	Sub menu	Items or setting values
Display	No-signal Screen	Black Blue Logo Gradation

Home Screen Auto Disp.

The display condition for the Home Screen Auto Disp. setting is added.

Previous Display Menu (Version 1.20)

Top menu	Sub menu	Display condition
Display	Home Screen Auto Disp.	—

New Display Menu (Version 2.00)

Top menu	Sub menu	Display condition
Display	Home Screen Auto Disp.	Setting is only displayed when Connection Guide Display is set to Off in the projector's Network menu.

Standby Mode and Quick Startup

The display conditions for the **Standby Mode** and **Quick Startup** settings are added.

Previous Operation Menu (Version 1.20)

Top menu	Sub menu	Display condition
Operation	Standby Mode	Setting is only displayed when A/ V Output is set to While Projecting in the projector's Signal I/O menu.
	Quick Startup	

New Operation Menu (Version 2.00)

Top menu	Sub menu	Display condition
Operation	Standby Mode	Setting is only displayed in the following cases:
	Quick Startup	
		<ul style="list-style-type: none"> • A/V Output is set to While Projecting in the projector's Signal I/O menu. • Auto Power On is set to Off in the projector's Network menu.

Transmitter Settings

The setting for the **Transmitter Settings** is added.

Previous Network Menu (Version 1.20)

No setting is available.

New Network Menu (Version 2.00)

Top menu	Sub menu	Items or setting values
Network	Transmitter Settings	Start Pairing
		Auto Power On
		Connection Guide Display

Start Pairing

Updates the network information of the wireless transmitter from your computer using the Epson Wireless Transmitter Settings software. See the *Epson Wireless Transmitter Settings Operation Guide* for details.

This setting is only displayed when the wireless LAN module is installed and **Simple AP** is set to **On** in the projector's **Network Settings** menu.

Auto Power On

Set to **On** to turn on the projector automatically when you connect a computer using the optional wireless presentation systems.

This setting is only displayed in the following cases:

- When **A/V Output** is set to **While Projecting** in the projector's **Signal I/O** menu.
- When **Quick Startup** is set to **Off** in the projector's **Operation** menu.

Connection Guide Display

Set to **On** to automatically display the connection guide for the wireless transmitter (Epson Wireless Presentation) instead of the Home screen when there is no input signal when you turn on the projector. The changed setting takes effect the next time you turn on the projector.

When you use a QR code to connect a mobile device, set to **Off**.

This setting is only displayed when **Content Playback** is set to **Off** in the projector's **Operation** menu.

Wireless LAN Sys.

The Wireless LAN Sys. setting is added.

Previous Network Settings Menu (Version 1.20)

No setting is available.

New Network Settings Menu (Version 2.00)

Top menu	Sub menu	Items or setting values
Network	Network Settings	Wireless LAN Sys. <ul style="list-style-type: none">• 802.11ac (Wi-Fi 5)• 802.11n (Wi-Fi 4)

Sets the communication method between the projector and the mobile device.

The available methods vary depending on countries and regions.

Refer to these sections for details on changes to user operations.

▶▶ Related Links

- "Using the Wireless Presentation System to Connect Windows/Mac Computers" [p.18](#)

Using the Wireless Presentation System to Connect Windows/Mac Computers

You can use the optional wireless presentation system to quickly connect the projector to computers wirelessly and project your image. Your wireless presentation system (ELPWP10) includes two wireless transmitters (ELPWT01) and one wireless LAN module (ELPAP11).

See the *Epson Wireless Presentation System User's Guide* for details.

▶▶ Related Links

- "Setting Up the Wireless Presentation System for the First Time" [p.18](#)
- "Projecting with the Wireless Presentation System" [p.19](#)

Setting Up the Wireless Presentation System for the First Time

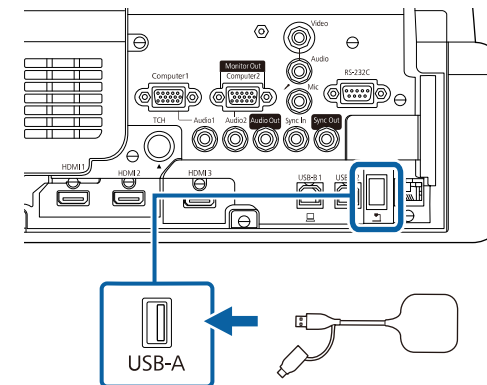
The first time you start using the wireless presentation system, you need to make preparations such as pairing the wireless transmitters with the projector.



- Select network settings for the projector before pairing.
- You need to pair the wireless transmitters again when you change **Projector Name** or **Passphrase** in the **Network Settings** menu.
- You can also pair the wireless transmitters from your computer using the Epson Wireless Transmitter Settings software. See the *Epson Wireless Transmitter Settings Operation Guide* for details.
- You can download the necessary software and manuals from the following Web site:
epson.sn

1 Turn on the projector.

2 Connect the wireless transmitter to the projector's USB-A port.



The network information is written and a completion message is displayed. It may take some time to finish pairing.


Caution

Do not disconnect the power cord or the wireless transmitter from the projector while the network information is being written. If the power cord or wireless transmitter is disconnected, the projector may not start correctly. Make sure the completion message is displayed before disconnecting the wireless transmitter.

3 Connect the other wireless transmitters if you want to continue pairing.

4 Select **Yes** to set **Connection Guide Display** to **On** if necessary.



- We recommend selecting **Yes**. The next time you turn on the projector and no signal is being input, the connection guide for the wireless transmitter (Epson Wireless Presentation) is displayed.
- The message prompting you to set **Connection Guide Display** to **On** is displayed when **Connection Guide Display** is set to **Off** and **Content Playback** is set to **Off**.
- You can change the connection guide display in the projector's **Network** menu.
 **Network > Transmitter Settings > Connection Guide Display**

5 Remove the wireless transmitter from the projector and insert the wireless LAN module into the same port used for the wireless transmitter.


6 Press the [Menu] button on the control panel or remote control.

7 Make sure **Wireless LAN Power** is set to **On** in the projector's **Management** menu and **Simple AP** is set to **On** in the projector's **Network Settings** menu.

We recommend turning the projector off and then back on to enable the connection guide display.



If you set the **Auto Power On** setting to **On** in the projector's **Network** menu, you can start projection even if the projector is in standby mode (when the power is off).

 **Network > Transmitter Settings > Auto Power On**

Projecting with the Wireless Presentation System

You can use the paired wireless transmitter to quickly establish direct connection between the projector (receiver) and Windows/Mac computers and easily project your images.



Make sure the wireless LAN module is installed into your projector.

1 Turn on the projector.

2 Connect the wireless transmitter to a USB port on your computer.

3 Project your content with the Epson Wireless Presentation software in the wireless transmitter. See the *Epson Wireless Presentation System User's Guide* for details.

Refer to these sections for details about projector menu changes.

► **Related Links**

- "A/V Output" [p.20](#)
- "Auto Power On" [p.20](#)
- "Power On Trigger" [p.21](#)
- "Standby Mode and Quick Startup" [p.21](#)
- "Transmitter Settings" [p.22](#)

A/V Output

The display condition for the A/V Output setting is added.

Previous Signal I/O Menu (Version 2.00)

Top menu	Sub menu	Display condition
Signal I/O	A/V Output	Setting is only displayed in the following cases: <ul style="list-style-type: none"> • Quick Startup is set to Off in the projector's Operation menu. • Auto Power On is set to Off in the projector's Network menu.

New Signal I/O Menu (Version 2.10)

Top menu	Sub menu	Display condition
Signal I/O	A/V Output	Setting is only displayed in the following cases: <ul style="list-style-type: none"> • Power On Trigger is set to Plug-in Detection in the projector's Operation menu. • Quick Startup is set to Off in the projector's Operation menu. • Auto Power On is set to Off in the projector's Network menu.

Auto Power On

The feature of the Auto Power On setting is changed.

Previous Operation Menu (Version 2.00)

Top menu	Sub menu	Feature
Operation	Auto Power On	Sets the image source from which you want to automatically start projection. When the projector detects the input signal from the selected image source, it projects automatically in standby mode. USB Display is only displayed when USB Display is set to On . (EB-735Fi/EB-725Wi)

New Operation Menu (Version 2.10)

Top menu	Sub menu	Feature
Operation	Auto Power On	<p>Sets the image source from which you want to automatically start projection.</p> <p>When you select HDMI1, you can set the method for automatically turning on the projector in the Power On Trigger setting.</p> <p>USB Display is only displayed when USB Display is set to On. (EB-735Fi/EB-725Wi)</p>

Power On Trigger

The **Power On Trigger** setting is added.

Previous Operation Menu (Version 2.00)

No setting is available.

New Operation Menu (Version 2.10)

Top menu	Sub menu	Items or setting values
Operation	Power On Trigger	Plug-in Detection
		Signal Detection

Sets the way the projector turns on when **Auto Power On** is set to **HDMI1**.

Plug-in Detection

Automatically turns on the projector when it detects that a connected device has been turned on.

Signal Detection

Automatically turns on the projector when it detects an HDMI video signal. This is useful for video meetings using Microsoft Teams Rooms. The projector turns on automatically when it receives an HDMI video signal from a device that supports Microsoft Teams Rooms and you can start the meeting immediately.



When set to **Signal Detection**, the standby power increases. Please consider the environment before making any changes.

Standby Mode and Quick Startup

The display conditions for the **Standby Mode** and **Quick Startup** settings are added.

Previous Operation Menu (Version 2.00)

Top menu	Sub menu	Display condition
Operation	Standby Mode	Setting is only displayed in the following cases: <ul style="list-style-type: none"> • A/V Output is set to While Projecting in the projector's Signal I/O menu. • Auto Power On is set to Off in the projector's Network menu.
	Quick Startup	

New Operation Menu (Version 2.10)

Top menu	Sub menu	Display condition
Operation	Standby Mode	Setting is only displayed in the following cases: <ul style="list-style-type: none"> • A/V Output is set to While Projecting in the projector's Signal I/O menu. • Power On Trigger is set to Plug-in Detection in the projector's Operation menu. • Auto Power On is set to Off in the projector's Network menu.
	Quick Startup	

New Setting for the Transmitter Settings in the Network Menu (Version 2.10)

Top menu	Sub menu	Display condition
Network	Transmitter Settings	Auto Power On setting: This setting is only displayed in the following cases: <ul style="list-style-type: none"> • A/V Output is set to While Projecting in the projector's Signal I/O menu. • Power On Trigger is set to Plug-in Detection in the projector's Operation menu. • Quick Startup is set to Off in the projector's Operation menu.

Transmitter Settings

The display condition for the **Auto Power On** setting in the setting for the **Transmitter Settings** is added.

Previous Setting for the Transmitter Settings in the Network Menu (Version 2.00)

Top menu	Sub menu	Display condition
Network	Transmitter Settings	Auto Power On setting: This setting is only displayed in the following cases: <ul style="list-style-type: none"> • A/V Output is set to While Projecting in the projector's Signal I/O menu. • Quick Startup is set to Off in the projector's Operation menu.

Refer to these sections for details about projector menu changes.

▶ **Related Links**

- "Mouse icon on Toolbar" [p.23](#)

Mouse icon on Toolbar

The **Mouse icon on Toolbar** setting is added to the **Interactive** menu.

Previous Interactive Menu (Version 2.10)

No setting is available.

New Interactive Menu (Version 2.20)

Top menu	Sub menu	Items or setting values
Interactive (EB-735Fi/ EB-725Wi)	Mouse icon on Toolbar	<ul style="list-style-type: none">• On• Off

The **Mouse icon on Toolbar** setting specifies whether or not to display the mouse button on the interactive toolbar.

Refer to these sections for details on changes to user operations.

▶▶ Related Links

- "Added Mouse Button and Status Indicator to the Toolbar" [p.24](#)

Added Mouse Button and Status Indicator to the Toolbar



A mouse button and status indicator have been added to the interactive toolbar (EB-735Fi/EB-725Wi). When you select the mouse button with the interactive pen or your finger, you can operate the computer's mouse cursor using the pen or finger that pressed this button. The status indicator shows the currently selected tool for each interactive pen and finger.

Previous Interactive Toolbar (Version 2.10)



New Interactive Toolbar (Version 2.20)



- : You can operate the computer's mouse cursor using the interactive pen or finger that pressed this button.
- : You can check the currently selected tool for each interactive pen and finger.



- Mouse operations are available when **PC Interactivity** is enabled.
- The mouse button appears when the **Screen Type** setting is set to **16:9** (EB-735Fi) or **16:10** (EB-725Wi) in the projector's **Installation** menu.

Refer to these sections for details about projector menu changes.

▶ **Related Links**

- "Added Touch Unit Setup (Manual) setting to the Touch Unit menu" [p.25](#)

Added Touch Unit Setup (Manual) setting to the Touch Unit menu

The **Touch Unit Setup (Manual)** setting has been added to the **Touch Unit** setting.

The **Touch Unit Setup** setting has been changed to **Touch Unit Setup (Auto)**.

See your projector's *Installation Guide* for details.

Previous Touch Unit Menu (Version 2.20)

Top Menu	Sub Menu	Setting values
Installation	Touch Unit	Touch Unit Setup
Pen/Touch		

New Touch Unit Menu (Version 2.35)

Top Menu	Sub Menu	Setting values
Installation	Touch Unit	<ul style="list-style-type: none">• Touch Unit Setup (Auto)• Touch Unit Setup (Manual)
Pen/Touch		

Refer to these sections for details about projector menu changes.

► **Related Links**

- "Access Control and Secondary Connections" [p.26](#)

Access Control and Secondary Connections

Setting items for **Screen Mirroring** on the **Network Projection** menu have been changed.

Previous Network Projection Menu (Version 2.35)

Top menu	Sub menu	Items or setting values
Interrupt Connection	On Off	Set to On to allow other users to interrupt image projection. Set to Off to use two Screen Mirroring sources.

New Network Projection Menu (Version 2.40)

Top menu	Sub menu	Items or setting values
Access Control	On Off	When set to On , a confirmation screen asking whether to allow projection is displayed each time you connect using Screen Mirroring.

Top menu	Sub menu	Items or setting values
Secondary Connections	No Interruptions Off	Selects the connection behavior for devices attempting to connect during Screen Mirroring. <ul style="list-style-type: none"> • No Interruptions: The second device is connected while the images from the previously connected device are still being projected as the Screen Mirroring 1 source. When the input source is switched to Screen Mirroring 2, the images from the second device are projected. You can connect up to two devices at the same time. • Off: No additional devices can be connected to this projector while Screen Mirroring is in progress.

Refer to these sections for details on changes to user operations.

▶ Related Links

- "Notes for Miracast Connection" [p.27](#)
- "Added Delete Block List Icon to the Home Screen" [p.27](#)

Notes for Miracast Connection

You can force the device to disconnect during Miracast connection.

Press the [Esc] button on the remote control or the control panel during projection.

Added Delete Block List Icon to the Home Screen

The **Delete Block List** icon has been added to the Home screen.

When **Access Control** is set to **On** in the projector's **Network Projection** menu, you can manage which devices are allowed to connect using Screen Mirroring. If a device tries to connect and you block it from the confirmation screen, it is added to a block list. To unblock devices, use this icon to cancel blocked connections.

Refer to these sections for details about projector menu changes.

► **Related Links**

- "Access Control and Secondary Connections" [p.28](#)

Access Control and Secondary Connections

- The display condition for **On** in the **Access Control** menu has been added.
- **Interruptions OK** has been added to **Screen Mirroring > Secondary Connections** in the **Network Projection** menu.

Previous Network Projection Menu (Version 2.40)

Top menu	Sub menu	Items or setting values
Access Control	On Off	When set to On , a confirmation screen asking whether to allow projection is displayed each time you connect using Screen Mirroring.
Secondary Connections	No Interruptions Off	<p>Selects the connection behavior for devices attempting to connect during Screen Mirroring.</p> <ul style="list-style-type: none"> • No Interruptions: The second device is connected while the images from the previously connected device is still projected as the Screen Mirroring 1 source. When the input source is switched to Screen Mirroring 2, the images from the second device are projected. You can connect up to two devices at the same time. • Off: No additional devices can be connected to this projector while Screen Mirroring is in progress.

New Network Projection Menu (Version 2.41)

Top menu	Sub menu	Items or setting values
Access Control	On Off	<p>When set to On, a confirmation screen is displayed each time you connect using Screen Mirroring, asking whether to allow projection.</p> <p>On is not displayed when Secondary Connections is set to No Interruptions.</p>
Secondary Connections	Interruptions OK No Interruptions Off	<p>Selects the connection behavior for devices attempting to connect during Screen Mirroring.</p> <ul style="list-style-type: none"> • Interruptions OK: Allows another user to interrupt image projection during Screen Mirroring projection. This setting is displayed only when Access Control is set to Off. • No Interruptions: The second device is connected while the images from the previously connected device are still being projected as the Screen Mirroring 1 source. When the input source is switched to Screen Mirroring 2, the images from the second device are projected. You can connect up to two devices at the same time. • Off: No additional devices can be connected to this projector while Screen Mirroring is in progress.

Appendix

Check these sections for the newly added optional accessories and the important notices about your product.

▶ Related Links

- "Optional Accessories" [p.30](#)
- "Notices" [p.31](#)

The following optional accessories are available. Please purchase these products as and when needed.

Details of accessories are subject to change without notice and availability may vary depending on the country of purchase.

▶ **Related Links**

- "For Wireless Connection" [p.30](#)

For Wireless Connection

Wireless Presentation System ELPWP10

Use when directly connecting to Windows/Mac computers and projecting images wirelessly. Includes two wireless transmitters (ELPWT01) and one wireless LAN module (ELPAP11).

Wireless Transmitter ELPWT01

Additional wireless transmitter for wireless presentation system.

Check these sections for important notices.

► **Related Links**

- "Laser Safety Information" [p.31](#)
- "Copyright Notice" [p.36](#)
- "Trademarks" [p.37](#)
- "Copyright Attribution" [p.37](#)

Laser Safety Information

This product is a laser projector that projects images onto surfaces such as walls and screens.

Epson consumer laser projectors and their accessories that will be placed on the market after June 21, 2023 are consumer Class 1 laser products that comply with the following standards:

- IEC60825-1:2014
- EN60825-1:2014+A11:2021
- EN50689:2021

A laser warning label is attached to the product.

French

Ce produit est un projecteur laser qui projette des images sur des surfaces comme des murs et des écrans.

Les projecteurs laser grand public Epson et leurs accessoires qui seront mis sur le marché après le 21 juin 2023 sont des produits laser grand public de classe 1 conformes aux normes suivantes :

- IEC60825-1:2014
- EN60825-1:2014+A11:2021
- EN50689:2021

Une étiquette d'avertissement laser est apposée sur le produit.

German

Dieses Produkt ist ein Laserprojektor, der Bilder an Oberflächen wie Wände und Leinwände projiziert.

Epson-Laserprojektoren für Verbraucher und deren Zubehör, die nach dem 21. Juni 2023 auf den Markt gebracht werden, sind Verbraucher-Laserprodukt Klasse 1, die folgende Standards einhalten:

- IEC60825-1:2014
- EN60825-1:2014+A11:2021
- EN50689:2021

Ein Laserwarnetikett ist am Produkt angebracht.

Italian

Questo prodotto è un proiettore laser che proietta immagini su superfici come pareti e schermi.

I proiettori laser consumer Epson e i relativi accessori immessi sul mercato dopo il 21 giugno 2023 sono prodotti laser consumer di Classe 1 conformi ai seguenti standard:

- IEC60825-1:2014
- EN60825-1:2014+A11:2021
- EN50689:2021

Al prodotto è apposta un'etichetta di avvertenza laser.

Spanish

Este producto es un proyector láser que proyecta imágenes en superficies como paredes y pantallas.

Los proyectores láser de consumo Epson y sus accesorios que se comercializarán después del 21 de junio de 2023 son productos láser de consumo de Clase 1 que cumplen los siguientes estándares:

- IEC60825-1:2014
- EN60825-1:2014+A11:2021
- EN50689:2021

Se ha colocado una etiqueta de advertencia de láser en el producto.

Portuguese

Este produto é um projetor laser que projeta imagens em superfícies como paredes e telas.

Os projetores laser de consumo da Epson e respetivos acessórios que serão disponibilizados no mercado após 21 de junho de 2023 são produtos laser de Classe 1 de consumo que cumprem as seguintes normas:

- IEC60825-1:2014
- EN60825-1:2014+A11:2021
- EN50689:2021

A etiqueta de aviso de laser está afixada no produto.

Korean

이 제품은 이미지를 벽면과 스크린 등의 표면에 투사하는 레이저 프로젝터입니다.

2023년 6월 21일 이후에 출시될 Epson 소비자 레이저 프로젝터 및 그 액세서리는 소비자 클래스 1 레이저 제품으로 다음 표준을 준수합니다.

- IEC60825-1:2014
- EN60825-1:2014+A11:2021
- EN50689:2021

레이저 경고 라벨이 제품에 부착되어 있습니다.

Dutch

Dit product is een laserprojector die beelden projecteert op oppervlakken, zoals muren en schermen.

Epson laserprojectors voor consumenten en hun accessoires die op de markt worden gebracht na 21 juni 2023 zijn laserproducten van Klasse 1 voor consumenten die voldoen aan de volgende normen:

- IEC60825-1:2014
- EN60825-1:2014+A11:2021
- EN50689:2021

Er is een laserwaarschuingslabel aan het product bevestigd.

Danish

Dette produkt er en laserprojektor, der projicere billeder på overflader såsom vægge og lærreder.

Epson's laserprojektorer og deres tilbehør, der kommer på markedet efter 21. juni 2023 er forbrugsprodukter med en klasse 1 laser, der er i overensstemmelse med følgende standarder:

- IEC60825-1:2014
- EN60825-1:2014+A11:2021
- EN50689:2021

Produktet er mærket med et laseradvarsel.

Czech

Toto je laserový projektor, který promítá obraz na plochu, například na stěny a promítací plátna.

Spotřební laserové projektory Epson a jejich příslušenství, které budou uvedeny na trh po 21. červnu 2023, jsou spotřebitelské laserové produkty třídy 1, které vyhovují následujícím normám:

- IEC60825-1:2014
- EN60825-1:2014+A11:2021
- EN50689:2021

Tento produkt je opatřen štítkem s výstrahou před laserem.

Hungarian

Ez a termék egy lézerkivetítő, amely képeket vetít felületekre, például falakra és vásznanakra.

Az Epson 2023. június 21. után piacra kerülő fogyasztói lézerkivetítői és tartozékai 1. osztályú fogyasztói lézertermékek, amelyek megfelelnek az alábbi szabványoknak:

- IEC60825-1:2014
- EN60825-1:2014+A11:2021
- EN50689:2021

A termékre lézerrel kapcsolatos figyelmeztetést tartalmazó címke van ragasztva.

Polish

Ten produkt to projektor laserowy, który wykonuje projekcję obrazów na takich powierzchniach jak ściany i ekrany.

Projektory laserowe firmy Epson dla konsumentów i ich akcesoria, które zostaną wprowadzone na rynek po 21 czerwca 2023 r., to konsumenckie produkty laserowe klasy 1, które są zgodne z następującymi normami:

- IEC60825-1:2014
- EN60825-1:2014+A11:2021
- EN50689:2021

Do produktu dołączona jest etykieta ostrzegawcza dotycząca lasera.

Norwegian

Dette produktet er en laserprojektor som projiserer bilder på overflater som vegger og skjermer.

Epson forbrukerlaserprojektorer og tilbehør som markedsføres etter 21. juni 2023 er laserprodukter i klasse 1 for forbruker som overholder følgende standarder:

- IEC60825-1:2014
- EN60825-1:2014+A11:2021
- EN50689:2021

En etikett med laseradvarsel er festet til produktet.

Swedish

Den här produkten är en laserprojektor som projicerar bilder på ytor som väggar och skärmar.

Epsons laserprojektorer och tillbehör för konsumentbruk som kommer att släppas ut på marknaden efter den 21 juni 2023 är laserprodukter för konsumentbruk av klass 1 som uppfyller följande standarder:

- IEC60825-1:2014
- EN60825-1:2014+A11:2021
- EN50689:2021

En laservarningsetikett är fäst på produkten.

Finnish

Tämä tuote on laserprojektor, joka projisoi kuvia pinnoille, kuten seinät ja valkokankaat.

Epson-kuluttaja-laserprojektorit ja niiden lisävarusteet, jotka tulevat markkinoille 21. kesäkuuta 2023 jälkeen, ovat Kuluttajaluokan 1 lasertuotteita, jotka ovat seuraavien standardien mukaisia:

- IEC60825-1:2014
- EN60825-1:2014+A11:2021
- EN50689:2021

Laser-varoitustarra on kiinnitetty tuotteeseen.

Russian

Данный продукт является лазерным проектором, который проецирует изображения на такие поверхности, как стены и экраны.

Потребительские лазерные проекторы Epson и аксессуары к ним, которые поступят в продажу после 21 июня 2023 г., относятся к потребительским лазерным продуктам класса 1 и соответствуют следующим стандартам:

- IEC60825-1:2014
- EN60825-1:2014+A11:2021
- EN50689:2021

На продукте имеется этикетка с предупреждением о лазерном облучении.

Turkish

Bu ürün, görüntüleri duvar ve perde gibi yüzeylere yansıtan bir lazer projektördür.

21 Haziran 2023 tarihinden sonra piyasaya sürülecek olan Epson tüketici lazer projektörleri ve aksesuarları, aşağıdaki standartlara uygun tüketici Sınıfı 1 lazer ürünleridir:

- IEC60825-1:2014
- EN60825-1:2014+A11:2021
- EN50689:2021

Üründe lazer uyarı etiketi vardır.

Greek

Αυτό το προϊόν είναι ένας βιντεοπροβολέας λέιζερ που προβάλλει εικόνες σε επιφάνειες, όπως τοίχους και οθόνες.

Οι βιντεοπροβολείς λέιζερ της Epson και τα αξεσουάρ τους που θα διατεθούν στην αγορά μετά τις 21 Ιουνίου 2023 είναι προϊόντα λέιζερ κλάσης 1 που συμμορφώνονται με τα ακόλουθα πρότυπα:

- IEC60825-1:2014
- EN60825-1:2014+A11:2021
- EN50689:2021

Έχει τοποθετηθεί ετικέτα προειδοποίησης λέιζερ επάνω στο προϊόν.

Romanian

Acest produs este un proiector cu laser care proiectează imagini pe suprafețe precum pereți și ecrane.

Proiectoarele laser de consum Epson și accesoriile acestora care vor fi introduse pe piață după 21 iunie 2023 sunt produse laser de consum de clasa 1 care respectă următoarele standarde:

- IEC60825-1:2014
- EN60825-1:2014+A11:2021
- EN50689:2021

O etichetă de avertizare privind laserul este atașată produsului.

Slovenian

Ta izdelek je laserski projektor, ki projicira slike na površine, kot so stene in zasloni.

Potrošniški laserski projektorji družbe Epson in dodatna oprema zanje, ki bodo dani na trg po 21. juniju 2023, so potrošniški laserski izdelki razreda 1, ki izpolnjujejo naslednje standarde:

- IEC60825-1:2014
- EN60825-1:2014+A11:2021
- EN50689:2021

Na izdelek je pritrjena nalepka z opozorilom o laserju.

Ukrainian

Цей виріб є лазерним проектором, який проєцює зображення на такі поверхні, як стіни та екрани.

Споживчі лазерні проектори Epson та аксесуари до них, які надійдуть у продаж після 21 червня 2023 року, відносяться до споживчих лазерних виробів класу 1 та відповідають таким стандартам:

- IEC60825-1:2014
- EN60825-1:2014+A11:2021
- EN50689:2021

До виробу прикріплено етикетку з попередженням про лазерне опромінення.

Catalan

Aquest producte és un projector làser que projecta imatges sobre superfícies com parets i pantalles.

Els projectors làser de consum d'Epson i els accessoris que es posaran al mercat després del 21 de juny de 2023 són productes làser de consum de classe 1 que compleixen els estàndards següents:

- IEC60825-1:2014
- EN60825-1:2014+A11:2021
- EN50689:2021

Hi ha una etiqueta d'advertència làser adjunta al producte.

Slovak

Tento výrobok je laserový projektor, ktorý premieta obraz na povrchy, ako sú steny a obrazovky.

Spotrebiteľské laserové projektory Epson a ich príslušenstvo, ktoré budú uvedené na trh po 21. júni 2023, sú spotrebiteľské laserové výrobky triedy 1, ktoré spĺňajú nasledujúce normy:

- IEC60825-1:2014
- EN60825-1:2014+A11:2021
- EN50689:2021

Na výrobku je pripevnený laserový výstražný štítok.

Bulgarian

Този продукт е лазерен проектор, който прожектира изображения върху повърхности като стени и екрани.

Потребителски лазерни проектори на Epson и техните аксесоари, които ще бъдат пуснати на пазара след 21 юни 2023 са потребителски лазерни продукти от Клас 1, които изпълняват изискванията на следните стандарти:

- IEC60825-1:2014
- EN60825-1:2014+A11:2021
- EN50689:2021

Към продукта е прикачен етикет с предупреждение за лазер.

Croatian

Ovaj proizvod je laserski projektor koji projicira slike na površine kao što su zidovi i zasloni.

Epson potrošački laserski projektori i njihova dodatna oprema koji će biti stavljeni na tržište nakon 21. lipnja 2023. potrošački su laserski proizvodi klase 1 koji su u skladu sa sljedećim normama:

- IEC60825-1:2014
- EN60825-1:2014+A11:2021
- EN50689:2021

Naljepnica s upozorenjem za laser pričvršćena je na proizvod

Kazakh

Бұл өнім қабырғалар және экрандар сияқты беттерге кескіндерді проекциялайтын лазерлі проектор болып табылады.

Нарыққа 2023 жыл 21 маусымнан кейін қойылатын Epson тұтынушы лазерлі проекторлары мен аксессуарлары келесі стандарттарға сәйкес келетін 1 сыныпты тұтынушы лазерлі өнімдері болып табылады:

- IEC60825-1:2014
- EN60825-1:2014+A11:2021
- EN50689:2021

Лазерді ескерту жапсырмасы өнімге бекітілген.

Simplified Chinese

本产品是将图像投影到墙壁和屏幕等表面的激光投影机。

2023年6月21日之后投放市场的 Epson 消费类激光投影机及其配件是符合以下标准的消费类1类激光产品：

- IEC60825-1:2014
- EN60825-1:2014+A11:2021
- EN50689:2021

激光警告标签贴于产品上。

Traditional Chinese

本產品是將影像投影到牆壁及屏幕等表面上的雷射投影機。

2023年6月21日之後上市的 Epson 消費雷射投影機及配件為符合下列標準的消費性第1類雷射產品。：

- IEC60825-1:2014
- EN60825-1:2014+A11:2021
- EN50689:2021

雷射警告標籤貼於產品上。

Arabic

هذا المنتج عبارة عن جهاز عرض ضوئي ليزري يعرض صورًا على أسطح: كحوائط وشاشات.
أجهزة العرض الضوئي الليزرية الاستهلاكية من Epson وملحقاتها التي سَتُطرح في السوق بعد 21 يونيو 2023 هي منتجات ليزرية من الفئة 1 الاستهلاكية التي تتوافق مع المعايير التالية:

IEC60825-1:2014•

EN60825-1:2014+A11:2021•

EN50689:2021•

يُثبَّت ملصق تحذير من الليزر بالمنتج.

Farsi

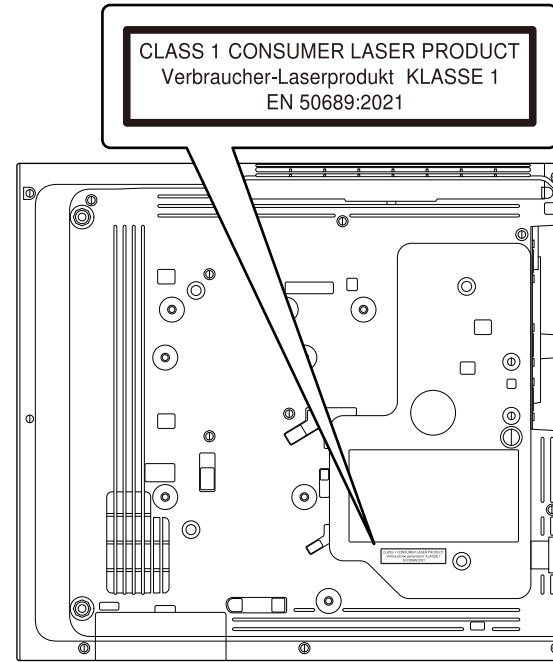
این دستگاه یک پروژکتور لیزری است که تصاویر را روی سطوحی مانند دیوار و صفحه پخش می کند.
پروژکتورهای لیزری Epson و وسیله های جانبی مربوط به آنها که بعد از 21 ژوئن 2023 وارد بازار شده اند از نوع محصولات لیزری کلاس 1 هستند که از استانداردهای زیر تبعیت می کنند:

IEC60825-1:2014•

EN60825-1:2014+A11:2021•

EN50689:2021•

یک برچست هشدار لیزر روی دستگاه زده شده است.

**Copyright Notice**

All rights reserved. No part of this publication may be reproduced, stored in a retrieval system, or transmitted in any form or by any means, electronic, mechanical, photocopying, recording, or otherwise, without the prior written permission of Seiko Epson Corporation. No patent liability is assumed with respect to the use of the information contained herein. Neither is any liability assumed for damages resulting from the use of the information contained herein.

Neither Seiko Epson Corporation nor its affiliates shall be liable to the purchaser of this product or third parties for damages, losses, costs, or expenses incurred by the purchaser or third parties as a result of: accident, misuse, or abuse of this product or unauthorized modifications, repairs, or alterations to this product,

or (excluding the U.S.) failure to strictly comply with Seiko Epson Corporation's operating and maintenance instructions.

Seiko Epson Corporation shall not be liable against any damages or problems arising from the use of any options or any consumable products other than those designated as Original Epson Products or Epson Approved Products by Seiko Epson Corporation.

The contents of this guide may be changed or updated without further notice. Illustrations in this guide and the actual projector may differ.

Trademarks

Windows and Microsoft Teams are trademarks or registered trademarks of Microsoft Corporation in the United States and/or other countries.

Mac is a trademark of Apple Inc.

Crestron[®], Crestron Connected[®] are registered trademarks of Crestron Electronics, Inc.

Other product names used herein are also for identification purposes only and may be trademarks of their respective owners. Epson disclaims any and all rights in those marks.

Software Copyright: This product uses free software as well as software to which this company holds the rights.

Copyright Attribution

This information is subject to change without notice.

© 2020 Seiko Epson Corporation

Rev.01 2026.02 EN